

WILDLIFE TRAVEL



DERBYSHIRE

26th to 30th June 2023

Derbyshire 2023: trip report and species lists

#	DATE	LOCATIONS AND NOTES
1	26 th June	Arrival at Cromford.
2	27 th June	National Stone Centre, Gang Mine and Rose End Meadows
3	28 th June	Cromford Canal
4	29 th June	Biggin Dale, Wolfscote Dale , Beresford Dale and Hartington
5	30 th June	Depart

Leaders

Philip Precey

Laurie Jackson

Derbyshire

Sussex

A gallery of photos from this holiday can be found on our Flickr site at
www.flickr.com/photos/wildlifetravel/albums/72177720309497423



Day One: 26th June. Arrival at Cromford.

Following our respective journeys to Cromford, in the Derwent Valley, we enjoyed a fine opening-night dinner.

Day Two: 27th June. Peak Fringe: National Stone Centre, Gang Mine and Rose End Meadows

After breakfast, picnics made, we had our first walk through the lanes of Cromford to meet up with our bus for the short journey up the hill towards Wirksworth.

We spent the first part of the morning exploring the quarries and former railway sidings around the impressively-named National Stone Centre. What was once a busy industrial area is now being reclaimed by nature, with cushions of Wild Thyme sprawling over the rocks, Wild Marjoram sprouting out from the walls, and ferns including Male Fern, Wall Rue and Maidenhair Spleenwort. In a corner of the railway siding we found a large patch of a local rarity, Pyrenean Scurvygrass growing here at one of just two or three sites for this rare biennial in the county, and right on the southern edge of its range in the country. For all its rarity, this isn't a very 'flashy' plant, and we were probably more impressed by the spikes of Common Spotted Orchid growing nearby...

Overhead, a group of 20 or so Swifts were feeding as the grey clouds gathered, while a Little Egret flew down the valley in the distance.

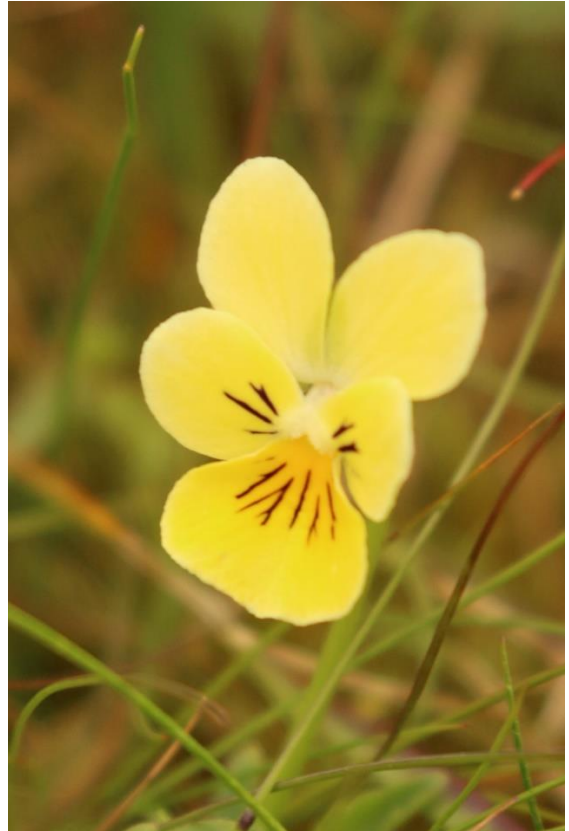
Heading down into the quarries, we found 'normal' Common Valerian, growing near to the more familiar Red Valerian, with other splashes of colour coming in the form of Broad-leaved Everlasting Pea, Meadow Crane's-bill, Musk Mallow, some very colourful Musk Thistle and the low-growing Common Restharrow.

Along the verge of the entry road we found a decent population of Broad-leaved Helleborine, its dropping flower spikes not yet open, while a flowering tree that attracted much attention amongst the planting scheme was identified as Willow-leaved Cotoneaster, a native of western China.

Crossing the road, we headed into Derbyshire Wildlife Trust (DWT)'s Gang Mine reserve, an area of Calaminarian grassland, a community that develops on the toxic soils associated with heavy metals: in this case, the spoil from centuries of lead mining. Here, amongst the Wild Thyme and Kidney Vetch, we found Spring Sandwort, still in flower on the spoil mounds, alongside the seed pods of Alpine Pennycress, two nationally scarce species, both characteristic of this community and both, rather confusingly, known locally as Leadwort.

Nearby, we found plenty of little Mountain Pansy flowers, another uncommon plant which is able to tolerate the heavy metal-rich soils. In common with the majority of the Derbyshire population of this lovely plant, all the flowers were of the pale yellow form, and we weren't able to find any of the much rarer bluey-purple form.

We took advantage of the soft cushions of Wild Thyme to have our picnic, close to a bright clump of Dyer's Greenweed, before continuing on our down-hill walk, passing around the edge of Dean Quarry, a massive bite out of the hillside, where we found Pyramidal Orchids, plenty more Common Spotted Orchids and Hairy St John's-wort.



Above (clockwise, from top left):
Common Spotted Orchid, Mountain Pansy, Pyramidal Orchid, Musk Thistle

At the bottom of the hill, we found more Broad-leaved Helleborine, and spikes of the impressive Ploughman's Spikenard, a sweet-smelling member of the (ever bothersome) Asteraceae, used (according to Blamey) to sweeten the air of hovels...

Into our second DWT reserve of the day, and Rose End Meadows where the ancient field system, long-term meadow management on richer, more 'neutral' soils has produced a subtly different grassland community. Alongside plenty of Common Spotted Orchids, the more obvious plants were Great Burnet, Meadow Crane's-bill, Meadowsweet and Betony, while numerous Meadow Brown and Ringlet butterflies were on the wing, along with one or two Chimney Sweeper moths, hanging around their Pignut food plant.

Day Three: 28th June. Cromford Canal.

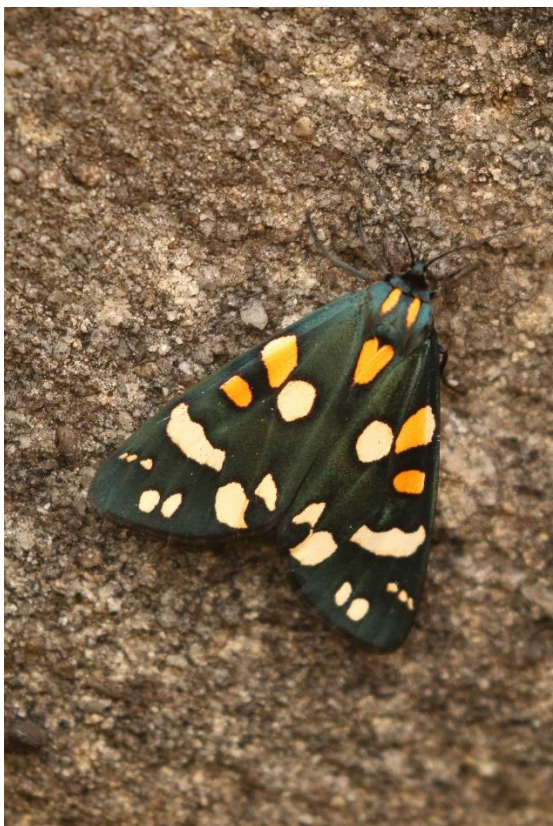
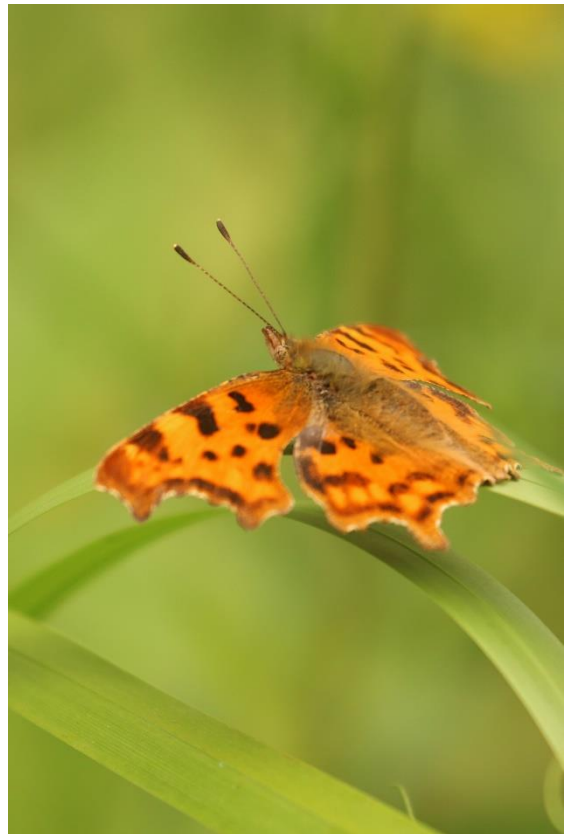
A later start to the day saw us walking down through Cromford to the train station, from where we took the local train a couple of stops down the Derwent Valley to Ambergate, and spent our day walking leisurely back up the valley along the Cromford Canal.

The day was one of wetland plants, with Marsh Woundwort, Branched Bur-reed and Yellow Iris amongst the more striking. Around Whatstandwell we found the not-so-small Small Teasel, an interesting local speciality. Under the surface, a range of aquatics included four species of pond-weed, Rigid Hornwort, Spiked Water-Milfoil and Common Water-Starwort, all species that are happy in nutrient-rich water: the canal was designated as a SSSI for its aquatic plant communities, but the habitat has changed considerably in recent decades, with woodland along the banks, and the water is now silt-filled and eutrophic.

The Wednesday soundtrack was made up of Nuthatches, with vocal family groups heard throughout the day. Other birds during the day included a family group of Coal Tits coming down to drink and wash at the water's edge; numerous families of Moorhen, with several quite confrontational adults trying to distract us from their youngsters; and a family of Mute Swans, with three newly-hatched cygnets.

Although the rain arrived towards the end of the afternoon, we mostly enjoyed good weather during the day, with the sunshine bringing plenty of interesting invertebrates out. We started off with a bang, with a Scarlet Tiger moth posing wonderfully by one of the canal bridges, an impressive black and white beast, before flashing her red skirts as she flew up into a more sheltered spot. Butterflies included a couple of bright Commas and a brief fly-past from a Purple Hairstreak, along with plenty of Meadow Brown, Ringlet and Speckled Wood. Over the water we found large numbers of Azure Damselflies, with many pairs 'in wheel' and egg-laying in the canal, along with smaller numbers of Large Red Damselfly, Blue-tailed Damselfly and Banded Demoiselle, a couple of Emperor dragonflies and one buzzing Broad-bodied Chaser.

Around the Hogweed and Meadowsweet flowers, we found a handful of Spotted Longhorn Beetles, a single handsome Wasp Beetle, Thick-thighed Flower Beetles and Red Soldier Beetles, while amongst the various hoverflies and Ashy Mining Bees, we also found a single Ferruginous Bee-grabber, a fly with a rather gruesome breeding strategy.



Above (clockwise, from top left): Little Grebe chick, Comma, Marsh Woundwort, Scarlet Tiger

Midway through the afternoon we made it to High Peak Junction, and a very welcome refreshment stop, with a nearby couple of family groups of Little Grebes, the lovely humbug youngsters being fed caddis fly larvae and other invertebrates by their attentive parents. Towards the end of our walk, a group of Sand Martins came buzzing low overhead and perched up in a Common Hawthorn tree, just as the weather caught up with us, and the heavens opened to welcome us back to the hotel.

Day Four: 29th June. Limestone Dales.

After breakfast, the bus took us up through the wooded valley, along the Via Gellia (named in a mock-Latin style after the Gell family who built the road in the late 18th century to connect their lead mines with the smelter in Cromford) and up onto the limestone plateau of the White Peak, and the pretty little village of Hartington.

Our walk took us first across the plateau, with neat dry stone walls lining the lanes, and a couple of singing Skylarks the only wildlife of note in what is now intensively farmed cattle and sheep grazing and silage fields. We soon headed downhill and away from the improved grasslands, into the limestone grassland of Biggin Dale, part of the Dovedale National Nature Reserve.

Turning over some rocks at the base of a derelict wall revealed the diminutive Rock Snail, a tiny 3mm snail that typically is restricted to walls and rock piles in limestone areas, and (perhaps more impressively) a female Great Crested Newt, flashing her fiery belly before she made her way back into the shady shelter of the rocks.

As we made our way along the dale, we found family groups of Redstarts seemingly everywhere we looked, with recently fledged juveniles being fed by attentive parents amongst the trees on the slopes. A Spotted Flycatcher, our second of the week, put in an appearance, an increasingly scarce bird in the county these days. Chiffchaff and Willow Warblers were singing from the trees, with a family group of Bullfinches flitting by amongst the Ash trees (most of which were looking pretty sorry for themselves, with Ash Die Back now cutting a swathe through the area's native woodlands).

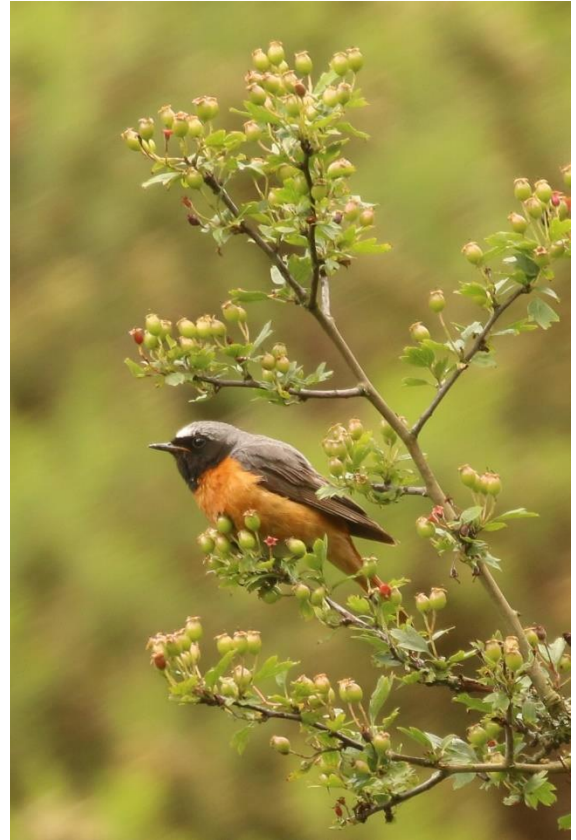
Continuing down the dale, we stopped at an area of limestone scree, where one of the area's star plants was in flower: several spikes of the nationally rare Red Hemp-Nettle were in full bloom, with a large population visible further up the slope through the binoculars.

After lunch, we turned into Wolfscote Dale and followed the River Dove upstream. The fast-flowing river was home to several family groups of Grey Wagtail, with a brood of Mandarin hiding amongst the overhanging branches. A young Grey Heron stalked the shallows, oblivious to its appreciative onlookers, and we found a Dipper, dipping (as they tend to do) along the rocky shore.

Along the water's edge we found a variety of wetland plants: Water Mint, Brooklime, Water Forget-me-Not and Monkey Flower, with Reed Canary Grass and Articulated Rush added to our 'grasses' list.

Up where Wolfscote Dale turns into Beresford Dale, the trees crowded in, with another Dipper on the river and plenty of ferns amongst the shady rocks, before we struck out back up the slope towards the village, arriving in plenty of time to avail ourselves of the farm shop and its delicious ice cream.

Philip Precey, Wildlife Travel. June 2023.



Above (clockwise, from top left): Red Hemp-Nettle, Common Redstart, Grey Heron, Monkey Flower

PLANTS

SCIENTIFIC NAME	ENGLISH NAME	Notes
FERNS		
<i>Asplenium adiantum-nigrum</i>	Black Spleenwort	Beresford Dale
<i>Asplenium ruta-muraria</i>	Wall Rue	common on walls
<i>Asplenium scolopendrium</i>	Hart's-tongue Fern	common eg woodlands
<i>Asplenium trichomanes</i>	Maidenhair Spleenwort	common on walls
<i>Blechnum spicant</i>	Hard Fern	Cromford Canal, Beresford Dale
<i>Dryopteris filix-mas</i>	Male Fern	large fern
<i>Polypodium vulgare</i>	Common Polypody	Cromford
<i>Pteridium aquilinum</i>	Bracken	Cromford Canal

DICOTYLEDONS**Apiaceae (Carrot family)**

<i>Aegopodium podagraria</i>	Ground Elder	Cromford
<i>Angelica sylvestris</i>	Wild Angelica	Cromford Canal
<i>Anthriscus sylvestris</i>	Cow Parsley	roadsides
<i>Apium nodiflorum</i>	Fool's Water Cress	Cromford Canal
<i>Chaerophyllum temulum</i>	Rough Chervil	Cromford
<i>Conopodium majus</i>	Pignut	limestone grassland
<i>Daucus carota</i>	Wild Carrot	Stone centre
<i>Heracleum sphodylium</i>	Hogweed	common roadside
<i>Myrrhis odorata</i>	Sweet Cicely	aniseed flavour
<i>Pimpinella major</i>	Greater Burnet-saxifrage	Cromford Canal
<i>Pimpinella saxifraga</i>	Burnet-saxifrage	Stone Centre, Gang Mine
<i>Torilis japonica</i>	Upright Hedge-parsley	Stone Centre

Aquifoliaceae (Holly family)

<i>Ilex aquifolium</i>	Holly	woodlands
------------------------	-------	-----------

Araliaceae (Ivy family)

<i>Hedera helix</i>	Ivy	common
---------------------	-----	--------

Asteraceae (Daisy family)

<i>Achillea millefolium</i>	Yarrow	common
<i>Arctium minus</i>	Lesser Burdock	Gang Mine
<i>Bellis perennis</i>	Daisy	common
<i>Carduus nutans</i>	Musk Thistle	Stone Centre
<i>Centaurea nigra</i>	Common Knapweed	limestone sites
<i>Centaurea scabiosa</i>	Greater Knapweed	Biggin Dale
<i>Cirsium arvense</i>	Creeping Thistle	common
<i>Cirsium palustre</i>	Marsh Thistle	Cromford Canal
<i>Cirsium vulgare</i>	Spear Thistle	common
<i>Eupatorium cannabinum</i>	Hemp Agrimony	Cromford Canal
<i>Hieracium vulgatum agg</i>	Common Hawkweed	tall yellow composite

Derbyshire 2023: trip report and species lists

SCIENTIFIC NAME	ENGLISH NAME	Notes
<i>Hypochaeris radicata</i>	Cat's-ear	Rose End Meadows
<i>Inula conyzae</i>	Ploughman's Spikenard	Dean Quarry
<i>Lapsana communis</i>	Nipplewort	common everywhere
<i>Lactuca serriola</i>	Prickly Lettuce	Cromford
<i>Leontodon hispidus</i>	Rough Hawkbit	Gang Mine
<i>Leucanthemum vulgare</i>	Ox-eye Daisy	common everywhere
<i>Matricaria discoidea</i>	Pineappleweed	Ambergate
<i>Petasites hybridus</i>	Butterbur	Cromford Canal
<i>Petasites fragrans</i>	Winter Heliotrope	Whatstandwell
<i>Pilosella aurantiaca</i>	Fox-and-cubs	Cromford
<i>Pilosella officinarum</i>	Mouse-ear Hawkweed	Biggin Dale
<i>Scorzonoides autumnalis</i>	Autumnal Hawkbit	Biggin Dale
<i>Senecio jacobaea</i>	Common Ragwort	common
<i>Sonchus asper</i>	Prickly Sow-thistle	curved 'auricles'
<i>Sonchus oleraceus</i>	Smooth Sow-thistle	pointed 'auricles'
<i>Taraxacum officinale</i> agg.	Dandelion	common
<i>Tragopogon pratensis</i> agg.	Goat's-beard	Gang Mine
<i>Tussilago farfara</i>	Colt's-foot	Gang Mine
Balsamiferaceae (Balsam family)		
<i>Impatiens glandulifera</i>	Himalayan Balsam	Cromford Canal
Boraginaceae (Borage family)		
<i>Myosotis arvensis</i>	Field Forget-me-not	Stone Centre
<i>Myosotis scorpioides</i>	Water Forget-me-not	Cromford Canal
<i>Myosotis sylvatica</i>	Wood Forget-me-not	Cromford Canal
<i>Pentaglottis sempervirens</i>	Green Alkanet	Cromford
<i>Symphytum officinale</i>	Common Comfrey	wet places
<i>Symphytum x uplandicum</i>	Russian Comfrey	dry places
Brassicaceae (Cabbage family)		
<i>Alliaria petiolata</i>	Garlic Mustard	common
<i>Capsella bursa-pastoris</i>	Shepherd's Purse	common
<i>Cardamine impatiens</i>	Narrow-leaved Bittercress	lane by Rose End Meadows
<i>Cochlearia danica</i>	Danish Scurvygrass	A6 road verges
<i>Cochlearia pyrenaica</i>	Pyrenean Scurvygrass	Stone Centre
<i>Erophila verna</i>	Common Whitlowgrass	Biggin Dale
<i>Hesperis matronalis</i>	Dame's Violet	Dean Quarry
<i>Lepidium didymum</i>	Lesser Swine-cress	Ambergate train station
<i>Nasturtium officinale</i>	Water-cress	River Dove
<i>Rorippa amphibia</i>	Greater Yellowcress	Cromford Canal
<i>Sisymbrium officinale</i>	Hedge Mustard	Ambergate
<i>Thlaspi caerulescens</i>	Alpine Pennycress	Gang Mine
Callitrichaceae (Water Starwort family)		
<i>Callitriche stagnalis</i> agg.	a water starwort	Cromford Canal & River Dove

SCIENTIFIC NAME	ENGLISH NAME	Notes
Campanulaceae (Bellflower family)		
<i>Campanula latifolia</i>	Giant Bellflower	Rose End Meadows
<i>Campanula portenschlagiana</i>	Dalmatian Bellflower	garden escape: darker, more bell-shaped flowers
<i>Campanula poscharskyarna</i>	Trailing Bellflower	garden escape: paler, more spreading flowers
<i>Campanula rotundifolia</i>	Harebell	common
Caprifoliaceae (Honeysuckle family)		
<i>Lonicera periclymenum</i>	Honeysuckle	Rose End Meadows
<i>Dipsacus pilosus</i>	Small Teasel	Cromford Canal
<i>Knautia arvensis</i>	Field Scabious	Rose End Meadows
<i>Scabiosa columbaria</i>	Small Scabious	Gang Mine
<i>Valeriana officinalis</i>	Common Valerian	Stone Centre
<i>Valeriana rubra</i>	Red Valerian	common on walls
Caryophyllaceae (Campion family)		
<i>Arenaria serpyllifolia</i>	Thyme-leaved Sandwort	limestone sites
<i>Cerastium fontanum</i>	Common Mouse-ear	Gang Mine
<i>Minuartia verna</i>	Spring Sandwort	Gang Mine
<i>Silene dioica</i>	Red Campion	common verge flower
<i>Stellaria graminea</i>	Lesser Stitchwort	Biggin Dale
Celastraceae (Bittersweet family)		
<i>Euonymus europaeus</i>	Spindle	Stone Centre car park
Ceratophyllaceae (Hornwort family)		
<i>Ceratophyllum demersum</i>	Rigid Hornwort	Cromford Canal
Cistaceae (Rock-rose family)		
<i>Helianthemum nummularium</i>	Common Rock-rose	Gang Mine
Cornaceae (Dogwood family)		
<i>Cornus sanguinea</i>	Dogwood	Dean Quarry
Convolvulaceae (Bindweed family)		
<i>Calystegia sepium</i>	Hedge Bindweed	Cromford Canal
Crassulaceae (Stonecrop family)		
<i>Sedum acre</i>	Biting Stonecrop	Stone Centre
Euphorbiaceae (Spurge family)		
<i>Euphorbia peplus</i>	Petty Spurge	Ambergate
<i>Mercurialis perennis</i>	Dog's Mercury	Cromford
Fabaceae (Pea family)		
<i>Anthyllis vulneraria</i>	Kidney Vetch	limestone sites
<i>Genista tinctoria</i>	Dyer's Greenweed	Gang Mine
<i>Lathyrus latifolius</i>	Broad-leaved Everlasting Pea	Stone Centre
<i>Lathyrus pratensis</i>	Meadow Vetchling	common
<i>Lotus corniculatus</i>	Bird's-foot-trefoil	common
<i>Medicago lupulina</i>	Black Medick	Stone Centre

Derbyshire 2023: trip report and species lists

SCIENTIFIC NAME	ENGLISH NAME	Notes
<i>Melilotus officinalis</i>	Ribbed Melilot	Gang Mine
<i>Ononis repens</i>	Common Restharrow	Stone Centre
<i>Trifolium campestre</i>	Hop Trefoil	Stone Centre, Biggin Dale
<i>Trifolium dubium</i>	Lesser Trefoil	Biggin Dale
<i>Trifolium pratense</i>	Red Clover	common
<i>Trifolium repens</i>	White Clover	common
<i>Ulex europaeus</i>	Gorse	Biggin Dale
<i>Vicia cracca</i>	Tufted Vetch	common
<i>Vicia sepium</i>	Bush Vetch	common
Gentianaceae (Gentian family)		
<i>Centaurium erythraea</i>	Common Centaury	Dean Quarry
Geraniaceae (Crane's-bill family)		
<i>Geranium endressii</i>	French Crane's-bill	Cromford
<i>Geranium lucidum</i>	Shining Crane's-bill	walls, eg Hartington
<i>Geranium molle</i>	Dove's-foot Crane's-bill	Wolfscote Dale
<i>Geranium pratense</i>	Meadow Crane's-bill	Rose End, Cromford Canal
<i>Geranium robertianum</i>	Herb-Robert	common on walls
Grossulariaceae (Currant family)		
<i>Grossularia uva-crispa</i>	Gooseberry	Gang Mine
Gunneraceae (Gunnera family)		
<i>Gunnera tinctoria</i>	Chilean Giant Rhubarb	Cromford Canal (planted)
Haloragaceae (Water Milfoil family)		
<i>Myriophyllum spicatum</i>	Spiked Water Milfoil	Cromford Canal
Hypericaceae (St John's Wort family)		
<i>Hypericum hirsutum</i>	Hairy St John's Wort	Stone Centre & Gang Mine
<i>Hypericum perforatum</i>	Perforate St John's Wort	Cromford Canal
Linaceae (Flax family)		
<i>Linum catharticum</i>	Fairy Flax	Rose End
Lamiaceae (Dead Nettle family)		
<i>Ajuga reptans</i>	Bugle	Dean Quarry
<i>Betonica officinalis</i>	Betony	Rose End Meadows
<i>Galeopsis angustifolia</i>	Red Hemp-nettle	Biggin Dale
<i>Glechoma hederacea</i>	Ground Ivy	woodlands
<i>Mentha aquatica</i>	Water Mint	Cromford Canal
<i>Origanum vulgare</i>	Marjoram	limestone sites
<i>Prunella vulgaris</i>	Selfheal	common
<i>Stachys palustris</i>	Marsh Woundwort	Cromford Canal
<i>Stachys sylvatica</i>	Hedge Woundwort	common
<i>Teucrium scorodonia</i>	Wood Sage	Biggin Dale
<i>Thymus drucei</i>	Wild Thyme	limestone sites
Malvaceae (Mallow family)		
<i>Malva moschata</i>	Musk Mallow	Stone Centre

SCIENTIFIC NAME	ENGLISH NAME	Notes
Oleaceae (Olive family)		
<i>Fraxinus excelsior</i>	Ash	seriously affected by Ash Die Back
Onagraceae (Willowherb family)		
<i>Circaea lutetiana</i>	Enchanter's-Nightshade	Cromford Canal
<i>Epilobium angustifolium</i>	Rosebay Willowherb	common
<i>Epilobium ciliatum</i>	American Willowherb	common : weedy
<i>Epilobium hirsutum</i>	Great Willowherb	Cromford Canal
<i>Epilobium montanum</i>	Broad-leaved Willowherb	common: weedy
<i>Epilobium parviflorum</i>	Hoary Willowherb	Cromford Canal
<i>Epilobium tetragonum</i>	Square-stemmed Willowherb	common: weedy
Orobanchaceae (Broomrape family)		
<i>Euphrasia nemorosa</i> agg.	Eyebright	Gang Mine
<i>Odontites vernus</i>	Red Bartsia	Gang Mine
<i>Rhinanthus minor</i>	Yellow Rattle	Rose End Meadows
Oxalidaceae (Wood Sorrel family)		
<i>Oxalis acetosella</i>	Wood Sorrel	Rose End Meadows
Papaveraceae (Poppy family)		
<i>Chelidonium majus</i>	Greater Celandine	Cromford
<i>Pseudofumaria lutea</i>	Yellow Corydalis	Cromford
Phrymaceae (Monkeyflower family)		
<i>Erythranthe guttatus</i>	Monkeyflower	Cromford Canal
Plantaginaceae (Plantain family)		
<i>Cymbalaria muralis</i>	Ivy-leaved Toadflax	Cromford
<i>Digitalis purpurea</i>	Foxglove	Cromford Canal
<i>Linaria purpurea</i>	Purple Toadflax	Cromford
<i>Plantago lanceolata</i>	Ribwort Plantain	common
<i>Plantago major</i>	Greater Plantain	common
<i>Veronica arvensis</i>	Wall Speedwell	common
<i>Veronica beccabunga</i>	Brooklime	River Dove
<i>Veronica chamaedrys</i>	Germander Speedwell	common
<i>Veronica serpyllifolia</i>	Thyme-leaved Speedwell	Biggin Dale
Polygalaceae (Milkwort family)		
<i>Polygala vulgaris</i>	Common Milkwort	grasslands
Polygonaceae (Dock family)		
<i>Persicaria maculosa</i>	Redshank	Cromford Canal
<i>Polygonum aviculare</i>	Common Knotgrass	Hartington
<i>Rumex acetosa</i>	Common Sorrel	Gang Mine
<i>Rumex acetosella</i>	Sheep's Sorrel	Gang Mine
<i>Rumex crispus</i>	Curled Dock	common
<i>Rumex obtusifolius</i>	Broad-leaved Dock	common
<i>Rumex sanguineus</i>	Wood Dock	common

Derbyshire 2023: trip report and species lists

SCIENTIFIC NAME	ENGLISH NAME	Notes
Primulaceae (Primrose family)		
<i>Lysimachia arvensis</i>	Scarlet Pimpernel	Cromford
<i>Lysimachia nummularium</i>	Creeping Jenny	Cromford
<i>Lysimachia punctata</i>	Dotted Loosestrife	garden throw-away: Gang Mine & Rose End
<i>Primula veris</i>	Cowslip	limestone sites
Ranunculaceae (Buttercup family)		
<i>Aconitum napellus</i> agg	Monks Hood	garden throw-away: Gang Mine, Rose End
<i>Anemone nemorosa</i>	Wood Anemone	Leaves: Rose End
<i>Ranunculus fluitans</i>	River Water Crowfoot	River Dove
<i>Ranunculus acris</i>	Meadow Buttercup	common
<i>Ranunculus repens</i>	Creeping Buttercup	common
Resedaceae (Mignonette family)		
<i>Reseda lutea</i>	Wild Mignonette	Stone Centre
Rosaceae (Rose family)		
<i>Crataegus monogyna</i>	Common Hawthorn	common
<i>Filipendula ulmaria</i>	Meadowsweet	Rose End
<i>Fragaria vesca</i>	Wild Strawberry	Dean Quarry
<i>Geum urbanum</i>	Wood Avens	common
<i>Potentilla anserina</i>	Silverweed	Ambergate
<i>Potentilla erecta</i>	Tormentil	Dean Quarry
<i>Potentilla reptans</i>	Creeping Cinquefoil	Ambergate
<i>Potentilla sterilis</i>	Barren Strawberry	Dean Quarry
<i>Prunus spinosa</i>	Blackthorn	common
<i>Rosa canina</i> agg.	Dog Rose	common
<i>Rubus fruticosus</i> agg	Bramble	common
<i>Rubus idaeus</i>	Raspberry	Dean Quarry
<i>Sanguisorba minor</i>	Salad Burnet	common
<i>Sanguisorba officinalis</i>	Great Burnet	Rose End Meadows
Rubiaceae (Madder family)		
<i>Cruciata laevipes</i>	Crosswort	grasslands
<i>Galium aparine</i>	Cleavers	common
<i>Galium mollugo</i>	Hedge Bedstraw	common
<i>Galium sternerii</i>	Limestone Bedstraw	limestone
<i>Galium verum</i>	Lady's Bedstraw	grasslands
Saxifragaceae (Saxifrage family)		
<i>Chrysosplenium alternifolium</i>	Opposite-leaved Golden Saxifrage	Cromford Canal
<i>Saxifraga tridactylites</i>	Rue-leaved Saxifrage	Biggin Dale
Scrophulariaceae (Figwort family)		
<i>Scrophularia nodosa</i>	Common Figwort	Dean Quarry & Cromford Canal
<i>Scrophularia auriculata</i>	Water Figwort	Cromford Canal

Derbyshire 2023: trip report and species lists

SCIENTIFIC NAME	ENGLISH NAME	Notes
Solanaceae (Nightshade family)		
<i>Solanum dulcamara</i>	Bittersweet	Cromford Canal
Urticaceae (Nettle family)		
<i>Parietaria judaica</i>	Pellitory of the Wall	walls
<i>Urtica dioica</i>	Stinging Nettle	common
<i>Urtica urens</i>	Small Nettle	Stone Centre
Viburnaceae (Viburnum family)		
<i>Sambucus nigra</i>	Elder	common
<i>Symphoricarpos albus</i>	Snowberry	Beresford Dale
<i>Viburnum opulus</i>	Guelder Rose	Dean Quarry
Violaceae (Violet family)		
<i>Viola lutea</i>	Mountain Pansy	Gang Mine

ANGIOSPERMS: MONOCOTYLEDONS		
Alismataceae (Water Plantain family)		
<i>Alisma plantago-aquatica</i>	Water Plantain	Cromford Canal
Amaryllidaceae (Daffodil family)		
<i>Allium ursinum</i>	Ramsons	Rose End Meadows
Araceae (Arum family)		
<i>Arum maculatum</i>	Lords-and-Ladies	Rose End Meadows
<i>Lemna minor</i>	Common Duckweed	Cromford Canal
<i>Lemna trisulca</i>	Ivy-leaved Duckweed	Cromford Canal
Asparagaceae (Asparagus family)		
<i>Hyacinthoides non-scripta</i>	Bluebell	Rose End Meadows
Cyperaceae (Sedge family)		
<i>Carex acutiformis</i>	Lesser Pond Sedge	Cromford meadows
<i>Carex pendula</i>	Pendulous Sedge	Pond, Rose End Meadows
<i>Carex remota</i>	Remote Sedge	Cromford Canal
<i>Carex spicata</i>	Spiked Sedge	Stone Centre
<i>Carex sylvatica</i>	Wood Sedge	Cromford Canal
Dioscoreaceae (Yam family)		
<i>Tamus communis</i>	Black Bryony	Rose End Meadows
Hydrocharitaceae (Frogbit Family)		
<i>Elodea nuttalli</i>	Nuttall's Waterweed	Rose End Meadows pond
Iridaceae (Iris Family)		
<i>Iris pseudacorus</i>	Yellow Iris	Cromford Canal
Juncaceae (Rush Family)		
<i>Juncus articulatus</i>	Jointed Rush	Wolfscote Dale
<i>Juncus bufonius</i>	Toad Rush	Cromford Canal
<i>Juncus inflexus</i>	Hard Rush	Rose End Meadows pond
<i>Juncus effusus</i>	Soft Rush	Cromford Canal
<i>Luzula campestris</i>	Field Wood-rush	Biggin Dale

Derbyshire 2023: trip report and species lists

SCIENTIFIC NAME	ENGLISH NAME	Notes
Orchidaceae (Orchid Family)		
<i>Anacamptis pyramidalis</i>	Pyramidal Orchid	Rose End Meadows
<i>Dactylorhiza fuchsii</i>	Common Spotted Orchid	grasslands
<i>Epipactis helleborine</i>	Broad-leaved Helleborine	Stone Centre and Dean Quarry
Poaceae (Grass Family)		
<i>Agrostis capillaris</i>	Common Bent	Rose End & Biggin Dale
<i>Alopecurus pratensis</i>	Meadow Fox-tail	Beresford Dale
<i>Anthoxanthum odoratum</i>	Sweet Vernal Grass	Rose End Meadows
<i>Arrhenatherum elatius</i>	False Oat-grass	common 'thug' grass
<i>Brachypodium sylvaticum</i>	Wood False Brome	Dean Quarry, Biggin Dale
<i>Briza media</i>	Quaking Grass	Biggin Dale
<i>Bromus ramosus</i>	Hairy Brome	Dean Quarry
<i>Bromus sterilis</i>	Sterile Brome	'seeds in socks'
<i>Cynosurus cristatus</i>	Crested Dog's Tail	Limestone grasslands
<i>Dactylis glomerata</i>	Cock's-foot	common 'thug' grass
<i>Deschampsia flexuosa</i>	Wavy Hair-grass	Biggin Dale
<i>Elymus caninus</i>	Bearded Couch	Cromford Canal
<i>Elymus repens</i>	Common Couch	Cromford Canal
<i>Festuca ovina</i>	Sheep Fescue	Biggin Dale
<i>Festuca rubra</i>	Red Fescue	Biggin Dale
<i>Glyceria fluitans</i>	Floating Sweet-grass	Cromford Canal
<i>Glyceria maxima</i>	Reed Sweet-grass	Cromford Canal
<i>Holcus lanatus</i>	Yorkshire Fog	Thug: downy, with stripy 'legs'
<i>Koeleria macrantha</i>	Crested Hair-grass	Gang Mine
<i>Melica uniflora</i>	Wood Melick	Rose End Meadows
<i>Phleum bertolonii</i>	Smaller Cat's-tail	Hartington
<i>Poa trivialis</i>	Rough Meadow-Grass	Dean Quarry
Potamogetonaceae (Pondweed family)		
<i>Potamogeton natans</i>	Broad-leaved Pondweed	Cromford Canal
<i>Potamogeton pectinatis</i>	Fennel-leaved Pondweed	Cromford Canal
<i>Potamogeton crispus</i>	Curled Pondweed	Cromford Canal
<i>Potamogeton pusillus</i>	Lesser Pondweed	Cromford Canal
Sparganiaceae (Bur-reed family)		
<i>Sparganium erectum</i>	Branched Bur-reed	Cromford Canal
Typhaceae (Cat-tail family)		
<i>Typha latifolia</i>	Bulrush	Cromford Canal

Derbyshire 2023: trip report and species lists

ENGLISH NAME	SCIENTIFIC NAME	1	2	3	4	5
MAMMALS						
Otter	<i>Lutra lutra</i>				S	
Grey Squirrel	<i>Sciurus carolinensis</i>		X	X	X	
Mole	<i>Talpa europaea</i>			D		
Rabbit	<i>Oryctolagus cuniculus</i>		X	X	X	
AMPHIBIANS						
Great Crested Newt	<i>Triturus cristatus</i>				X	
FISH						
Perch	<i>Perca fluviatilis</i>			X		
BIRDS						
Family Anatidae (Swans, geese and ducks)						
Mute Swan	<i>Cygnus olor</i>			X		
Canada Goose	<i>Branta canadensis</i>			X		
Mallard	<i>Anas platyrhynchos</i>			X	X	
Tufted Duck	<i>Aythya fuligula</i>				X	
Mandarin	<i>Aix galericulata</i>			X	X	
Family Phasianidae (Pheasants and Partridges)						
Pheasant	<i>Phasianus colchicus</i>				X	
Family Podicipedidae (Grebes)						
Little Grebe	<i>Tachybaptus ruficollis</i>			X		
Family Ardeidae (Hérons)						
Little Egret	<i>Egretta garzetta</i>		X			
Grey Heron	<i>Ardea cinerea</i>				X	
Family Accipitridae (Hawks and Eagles)						
Common Buzzard	<i>Buteo buteo</i>			X	X	
Eurasian Sparrowhawk	<i>Accipiter nisus</i>			X	X	
Family Falconidae (Falcons)						
Kestrel	<i>Falco tinnunculus</i>				X	
Family Rallidae (Rails)						
Moorhen	<i>Gallinula chloropus</i>			X		
Family Laridae (Gulls)						
Black-headed Gull	<i>Chroicocephalus ridibundus</i>		X	X	X	
Lesser Black-backed Gull	<i>Larus fuscus</i>		X		X	
Family Columbidae (Pigeons and Doves)						
Rock Dove/Feral Pigeon	<i>Columba livia</i>		X	X	X	
Stock Dove	<i>Columa oenas</i>		X	X	X	
Woodpigeon	<i>Columba palumbus</i>		X	X	X	
Collared Dove	<i>Streptopelia decaocto</i>		X	X	X	
Family Apodidae (Swifts)						
Swift	<i>Apus apus</i>		X	X	X	

Derbyshire 2023: trip report and species lists

ENGLISH NAME	SCIENTIFIC NAME	1	2	3	4	5
Family Picidae (Woodpeckers)						
Green Woodpecker	<i>Picus viridis</i>				X	
Great Spotted Woodpecker	<i>Dendrocopos major</i>		X	X	X	
Family Alaudidae (Larks)						
Skylark	<i>Alauda arvensis</i>				X	
Family Hirundinidae (Swallows and Martins)						
Sand Martin	<i>Riparia riparia</i>			X		
Swallow	<i>Hirundo rustica</i>		X	X	X	
House Martin	<i>Delichon urbica</i>		X	X	X	
Family Motacillidae (Pipits and Wagtails)						
Pied Wagtail	<i>Motacilla alba yarrellii</i>		X	X	X	
Grey Wagtail	<i>Motacilla cinerea</i>			X	X	
Family Troglodytidae (Wrens)						
Wren	<i>Troglodytes troglodytes</i>		X	X	X	
Family Cinclidae (Dippers)						
Dipper	<i>Cinclus cinclus</i>			X	X	
Family Prunellidae (Accentors)						
Dunnock	<i>Prunella modularis</i>		X	X	X	
Family Muscicapidae (Flycatchers and Chats)						
Robin	<i>Erithacus rubecula</i>		X	X	X	
Wheatear	<i>Oenanthe oenanthe</i>				X	
Redstart	<i>Phoenicurus phoenicurus</i>		X		X	
Spotted Flycatcher	<i>Muscicapa striata</i>			X	X	
Family Turdidae (Thrushes)						
Song Thrush	<i>Turdus philomelos</i>		X	X	X	
Blackbird	<i>Turdus merula</i>		X	X	X	
Family Sylviidae (Sylvia Warblers)						
Blackcap	<i>Sylvia atricapilla</i>		X	X	X	
Whitethroat	<i>Sylvia communis</i>		X		X	
Family Phylloscopidae (Leaf Warblers)						
Willow Warbler	<i>Phylloscopus trochilus</i>				X	
Chiffchaff	<i>Phylloscopus collybita</i>		X	X	X	
Family Regulidae (Crests)						
Goldcrest	<i>Regulus regulus</i>		X	X	X	
Family Paridae (Tits)						
Great Tit	<i>Parus major</i>		X	X	X	
Coal Tit	<i>Parus ater</i>			X	X	
Blue Tit	<i>Cyanistes caeruleus</i>		X	X	X	
Family Aegithalidae (Long-tailed Tits)						
Long-tailed Tit	<i>Aegithalos caudatus</i>		X			
Family Sittidae (Nuthatches)						
Nuthatch	<i>Sitta europaea</i>		X	X	X	

Derbyshire 2023: trip report and species lists

ENGLISH NAME	SCIENTIFIC NAME	1	2	3	4	5
Family Certhiidae (Treecreepers)						
Treecreeper	<i>Certhia familiaris</i>			X	X	
Family Corvidae (Crows)						
Magpie	<i>Pica pica</i>		X	X	X	
Jay	<i>Garrulus glandarius</i>		X	X	X	
Jackdaw	<i>Corvus monedula</i>		X	X	X	
Rook	<i>Corvus frugilegus</i>				X	
Carrion Crow	<i>Corvus corone</i>		X	X		
Raven	<i>Corvus corax</i>		X		X	
Family Sturnidae (Starlings)						
Starling	<i>Sturnus vulgaris</i>			X	X	
Family Passeridae (Sparrows)						
House Sparrow	<i>Passer domesticus</i>		X	X	X	
Family Fringillidae (Finches)						
Chaffinch	<i>Fringilla coelebs</i>		X	X	X	
Goldfinch	<i>Carduelis carduelis</i>		X	X	X	
Linnet	<i>Carduelis cannabina</i>		X		X	
Greenfinch	<i>Carduelis chloris</i>			X		
Bullfinch	<i>Pyrrhula pyrrhula</i>		X	X	X	



INVERTEBRATES

ENGLISH NAME	SCIENTIFIC NAME	1	2	3	4	5
LEPIDOPTERA: Butterflies						
Family Pieridae (Whites)						
Brimstone	<i>Gonopteryx rhamni</i>				X	
Large White	<i>Pieris brassicae</i>			X	X	
Small White	<i>Pieris rapae</i>			X	X	
Family Lycaenidae (Blues, Coppers, Hairstreaks)						
Purple Hairstreak	<i>Favonius quercus</i>			X		
Common Blue	<i>Polyommatus icarus</i>				X	
Family Nymphalidae (Nymphs, Fritillaries and Browns)						
Red Admiral	<i>Vanessa atalanta</i>			X	X	
Small Tortoiseshell	<i>Aglais urticae</i>		X	X	X	
Comma	<i>Polygonia c-album</i>			X		
Speckled Wood	<i>Parage aegeria</i>		X	X	X	
Small Heath	<i>Coenonympha pamphilus</i>		X		X	
Meadow Brown	<i>Maniola jurtina</i>		X	X	X	
Ringlet	<i>Aphantopus hyperantus</i>		X	X	X	
Family Hesperidae (Skippers)						
Large Skipper	<i>Ochlodes sylvanus</i>		X	X		
Small Skipper	<i>Thymelicus sylvestris</i>			X		
LEPIDOPTERA: Moths						
Cinnabar	<i>Tyria jacobaea</i>		X			
Silver Y	<i>Autographa gamma</i>			X	X	
Scarlet Tiger	<i>Callimorpha dominula</i>			X		
Mullein	<i>Cucullia verbasci</i>			X		
Yellow Shell	<i>Camptogramma bilineata</i>		X			
ODONATA: Dragonflies and Damselflies						
Family Calopterygidae (Demoiselles)						
Banded Demoiselle	<i>Calopteryx splendens</i>			X	X	
Family Coenagrionidae (Pond Damselflies)						
Large Red Damselfly	<i>Pyrrhosoma nymphula</i>			X		
Azure Damselfly	<i>Coenagrion puella</i>			X		
Blue-tailed Damselfly	<i>Ischnura elegans</i>			X		
Family Aeshnidae (Hawkers)						
Emperor	<i>Anax imperator</i>			X		
Family Libellulidae (Chasers)						
Broad-bodied Chaser	<i>Libellula depressa</i>			X	X	

Derbyshire 2023: trip report and species lists

ENGLISH NAME	SCIENTIFIC NAME	1	2	3	4	5
MISCELLANY						
Beetles (Coleoptera)						
Wasp Beetle	<i>Clytus arietis</i>			X		
Spotted Longhorn Beetle	<i>Rutpela maculata</i>			X		
Red Soldier Beetle	<i>Rhagonychia fulva</i>			X	X	
Alder Leaf Beetle	<i>Agelastica alni</i>		X	X	X	
Thick-thighed Beetle	<i>Oedemera nobilis</i>			X		
Flies (Diptera)						
Ferruginous Bee-grabber	<i>Sicus ferrugineus</i>			X		
White-clubbed Glasswing	<i>Scaeva pyrastris</i>		X			
Marmalade Hoverfly	<i>Episyrphus balteatus</i>		X	X		
Bumblebee Blacklet	<i>Cheilosia illustrata</i>			X		
Bees (Hymenoptera)						
Ashy Mining Bee	<i>Andrena cineraria</i>			X	X	
Garden Bumblebee	<i>Bombus hortorum</i>			X		
Red-tailed Bumblebee	<i>Bombus lapidarius</i>		X	X	X	
Common Carder Bee	<i>Bombus pascuorum</i>		X	X	X	



Above: Wasp Beetle and Small Skipper

thank you for travelling with us

www.wildlife-travel.co.uk

01954 713575

wildlifetravel@wildlifebcn.org



[/WildlifeTravel.UK](https://www.facebook.com/WildlifeTravel.UK)



[@wildlifetraveller](https://www.instagram.com/wildlifetraveller)



[@travel_wildlife](https://twitter.com/travel_wildlife)

The Manor House, Broad Street, Great Cambourne, Cambridge CB23 6DH