

# WILDLIFE TRAVEL

## CYPRUS

19<sup>th</sup> to 26<sup>th</sup> March 2026



## Cyprus 2026: trip report and species lists

### Leaders

Philip Precey  
Laurie Jackson

Derbyshire  
Sussex



Check [www.flickr.com/photos/wildlifetravel/albums/72177720332738233](https://www.flickr.com/photos/wildlifetravel/albums/72177720332738233) for a gallery of photos from our trip.

Front: Field Gladiolus *Gladiolus italicus* in the fields towards Neo Chorio. Above: *Orchis italica* near Neo Chorio

### **Day One: 19<sup>th</sup> March. Arrival in Cyprus**

An early start for most of us had us on our way, flying across the snowy Alps and then down the coastline of the Adriatic before cutting across to the Aegean and down to Cyprus. Paphos airport was quick and efficient, and we were soon out and on our way to the Akamas peninsula, and our home for the next week where, after settling into our rooms, we headed out for a wander around the local area.

Ambling up the little lane opposite the hotel, we found the first of many bright *Gladiolus italicus* in the field margins and had our first introduction to the sometimes-baffling orchids of Cyprus, with some just-coming-in-to-flower tongue orchids *Serapias orientalis* and the well-past-flowering seed heads of Fan-lipped Orchid *Anacamptis collina*.

After listening to the calling of a Black Francolin, hidden in the barley crops, and a Zitting Cisticola bouncing high above us, and not entirely certain what time zone or meal time we were in, we headed back to the hotel.

### **Day Two: 20<sup>th</sup> March. Baths of Aphrodite and Fontana Amorosa**

The day started as we meant to go on for the rest of the week (weather gods permitting...), with breakfast out on the terrace, overlooking the sweep of Chrysochou Bay while Swallows prospected noisily for nest sites under the eaves, and some very persistent cats eyed up the bacon... before a heavy rain shower had us breaking out the umbrellas, not for the last time today!

The rain was no doubt responsible for the arrival of an Isabelline Wheatear that suddenly appeared on the roof of the little chapel in the hotel garden.

With more rain forecast for the afternoon, we jumped on the local bus to take us to the Baths of Aphrodite and the start of the coastal track towards Fontana Amorosa.

After a visit to the shady, fern-fringed 'baths', with its two resident Eels, we pushed on along the hillsides beyond, where we found the splendid *Cyclamen persicum*, two species of *Bellevalia*, plenty of the creamy-yellow Turban Buttercup *Ranunculus asiaticus* and much more besides.

The birding was pretty quiet, until a male Cyprus Wheatear appeared in the top of a juniper bush higher up the hillside, perhaps another arrival fresh in this morning.

As the sun warmed the day up, four species of the island's lizards lounged in the sunny spots: several confiding Cyprus Starred Agamas, a couple of beady-eyed Snake-eyed Lacertids and a single golden-striped Bridled Skink posed nicely, while a single Troodos Wall Lizard proved rather shy, scuttling away once it caught sight of us.

Turning back when we did proved sensible, with the first of the afternoon rain showers arriving just as we made it to the shelter of the cliff-top café for lunch.

The sun broke through again over lunch, and most of us chose to brave the walk back to the hotel, passing the endemic *Bosea cyprica* and some of the freshest *Aristolochia sempervirens* flowers

imaginable as they clambered through the bushes, before the forecast afternoon deluge arrived, and the heavens emptied out over us...

### Day Three: 21<sup>st</sup> March. Paphos

And so, to our history lessons...

We started at the cave church and modern monastery of Agios Neophytos, where we paid homage to the beatified hermit and man of letters, in his various resting places.

Next stop was the Tombs of the Kings, part of the Paphos World Heritage Site, where the Ptolemaic rulers of the island were (perhaps) buried in tombs carved from the soft sandstone, and where our arrival coincided with a couple of heavy rain showers, encouraging most of us to spend quite a bit of time inside the shelter of the caves...

But for those braving the elements, we found the ground-hugging rosettes and large 'knapweed' flower of the wonderfully-named *Crocodilium creticum*, the lovely lilac and white flowers of *Statice Limonium sinuatum*, the silvery *Paronychia argentea* and the tiny groundsel-like *Senecio glaucus* subsp *cyprius*.

Out on the rough sandy ground beyond the tombs, wheatears came in three varieties: Northern, Eastern Black-eared and Isabelline, with a Tawny Pipit striding amongst them. The bushes were initially pretty empty, but the second shower of rain dropped a trio of Cretzschmar's Buntings, a male Common Whitethroat and at least six Rüppell's Warblers.

After lunch back on the bus, during yet more rain, we headed to Paphos Headland, and the spectacular mosaicked 'houses', with their illustrations of Greek gods, mythical sea monsters and hunting parties with their quarry, including Cyprus Mouflon, Barbary Partridge, Caspian Tiger and Barbary Lion.

After having our fill of the spectacular archaeology, we found plenty of birds to keep us entertained. The day's wheatear count increased to four species with the addition of a male Finsch's Wheatear, taking a rest before completing his journey back to the mountains of Turkey, sharing the same ancient quarry and final destination as a male Common Rock Thrush, which was in turn chased off by a male Blue Rock Thrush, while a Caspian Stonechat nearby flashed his white tail sides.

Moving down to the fields beneath the lighthouse, a bird popped up onto the top of a bush... not the Isabelline Wheatear we at first assumed, but instead a female Isabelline Shrike, a vagrant from Central Asia who first arrived in the area way back in November. She shared the same bushes with another handful of Rüppell's Warblers, a male Common Redstart and female Woodchat Shrike, which we in turn shared with a rapidly assembled group of bird watchers.

After the excitement, it was back to the bus, and just in time as the final rain shower of the day arrived.

#### Day Four: 22<sup>nd</sup> March. Pegeia Forest

Today we headed off across to the other side of the Akamas peninsula, to Pegeia Forest, an area of Turkish Pine and juniper woodland on shallow soils over the limestone.

Just a few steps from the road, once we were in the forest we were immediately up to our eyes in orchids. The varied purple spikes of the Eastern Green-winged Orchid *Anacamptis morio* subsp *syriaca* were everywhere amongst the pine needles, a handful of delicate Dense-flowered Orchid *Neotinea maculata* spikes were just coming into flower, and once we had our eye in, we soon began to spot spikes of Ophrys bee orchids, of an almost bewildering variety. Recent taxonomic work has renamed a lot of these orchids, with various forms that were once considered separate species now recognised as subspecies, while others are now 'mere' growth forms of other species, with the names having changed once, twice, or even more in the three decades that Wildlife Travel have been visiting these woods... meanwhile, the orchids themselves are all still the same!

First off the mark for us here were the distinctive little spikes of Yellow Bee Orchid *Ophrys lutea* subsp *galilaea* (once known as *Ophrys sicula*), easily recognised by their small flowers with broad yellow margins to the 'lip'. At the other end of the Ophrys scale were the tall, chunky flower spikes of *Ophrys bornmuelleri* subsp *grandiflora* (*Ophrys levantina* in old money), with its squared-off velvety brown lip, and tiny 'ears'. Nearby was the very distinctive *Ophrys argolica* subsp *elegans*, Cyprus's endemic form of the Eyed Bee Orchid, looking very rakish with its shiny fighter pilot's goggles and swept-back pink 'wings', while venturing further into the trees, we found the much more subdued eastern Mediterranean form of Sombre Bee Orchid *Ophrys fusca* subsp *cinereophila*, certainly the least 'showy' of the lot.

Elsewhere in the forest we found a few slightly-past-their-best spikes of the yellow-margined form of Eastern Woodcock Orchid *Ophrys umbilicata* subsp *flavomarginata* to add to the Ophrys array, and we finished up with perhaps the best of the lot, the rich velvety purple flowers of Early Spider Orchid *Ophrys sphegodes* subsp *taurica* (another plant with many names, having been *Ophrys mammosa*, *Ophrys alasiatica*, *Ophrys morio* and *Ophrys transhyrcana* at various times!)

Six forms of Ophrys bee orchid within a short amble of each other was certainly enough to keep us entertained for much of the day! But the forest had plenty more in store for us.

An area of limestone outcrops, with a series of vernal rock pools, was home to its own special suite of scarce plants. The rock pools themselves were home to the fried-egg flowers of Pond Water Crowfoot *Ranunculus peltatus*, the floating rosettes of Mudwort *Limosella aquatica* and the green 'hair' of Horned Pondweed *Zannichellia palustris*.

The little red succulent *Sedum microcarpum* was obvious on the edge of the mossy-covered thin soils, with abundant rosettes of the winter-flowering buttercup *Ranunculus cythareus* with its broad leaves flat to the ground, and amongst them, after some searching, were the tiny fronts of Small Adder's-tongue *Ophioglossum lusitanicum*, a tiny, winter-'flowering' fern which loves this particular micro-habitat.

In the same thin soils amongst the rocks, we found several nice spikes of the very delicate local form of Tongue Orchid, a plant once known as *Serapias aphroditae*, only known from a handful of

sites in the Akamas Peninsula, but now subsumed into *Serapias politisii*, itself perhaps a stable hybrid of *Serapias bergonii* and *S. parviflora*.... Nothing is ever simple with these orchids!

On the way to our lunch stop, some turning of rocks revealed a couple of Eastern Bent-toed Geckos, and a chunky Scolopendra giant centipede, while Budak's Snake-eyed Skink skittered amongst the pine needles, Snake-eyed Lacertids proved a bit friendlier, and a large Cyprus Starred Agama seemed completely oblivious to our passing by.

Lunch was taken looking out over the views down from the escarpment towards the coast, which is precisely where we headed next, to the sheltered harbour at Agios Georgios and the nearby Cape Drepanum. Mandrake plants were obvious across the trampled paths of the Cape where a Little Ringed Plover paraded in front of us, Crested Larks were singing from the bushes and at least three Isabelline Wheatears and another male Caspian Stonechat moved through during our wanderings.

Then there was just time to sample the local ice cream, before the day's rain showers finally caught up with us, and we headed back across the Akamas to Aphrodite Beach.

### Day Five: 23<sup>rd</sup> March. Latchi

A gentle day today, walking the lanes and paths over the hillsides up behind the hotel.

With surprisingly (mostly) blue skies and some spells of warm sun, there were plenty of butterflies on the wing during the day, most notably the handsome Eastern Festoon, freshly emerged and patrolling up and down the tracksides and hedges in search of mates and patches of their foodplant.

Orchids regained their hold on our attention, with a handful of *Ophrys umbilicata* subsp *umbilicata*, *Ophrys umbilicata* subsp *flavomarginata*, *Ophrys lutea* subsp *galilaea*, *Ophrys fusca* subsp *cinereophila* and *Ophrys sphegodes* subsp *taurica* in just a couple of rough field corners, and plenty of tongue orchids during the day, running the gamut from the delicate *Serapias 'aphroditae'* through to the chunky, deeply coloured spikes of *Serapias orientalis*.

Venturing down into the valley, we enjoyed the last few fresh spikes of the stately *Orchis punctulata* and *Himantoglossum robertianum* as well as a wonderful stand of *Orchis italica*, while Sardinian Warblers seemed to sing from every bush.

Back up to the ridge, and after passing the last of the year's Crown Anemones *Anemone coronaria* amongst the Turban Buttercups *Ranunculus asiaticus*, we headed back downhill to the coast where, after lunch, we explored another area of exposed limestone with ephemeral rock pools, where as well as the same species as yesterday we also found *Lythrum junceum* and *Callitriche brutia*, and one last orchid for the day in the form of some very new Pyramidal Orchids *Anacamptis pyramidalis*.

We ended our walk with two Marsh Harriers flying over the barley fields, making their way slowly northwards...

**Day Six: 24<sup>th</sup> March. Polemi, Agia Varvara and Mandria**

After another breakfast on the terrace, we were back on the bus and heading south.

Our first stop of the day gave us the chance to commune with the stately Royal Oak *Quercus infectoria* subsp *veneris*, with the 'magic oak' of Polis a particularly impressive, long-lived example of this endemic tree, forests of which once cloaked the lowlands of the island.

Next up was a short stop close to the village of Polemi, where only the first two or three flowers of the bright red *Tulipa agenensis* were open amongst a field full of yet-to-emerge buds, getting themselves geared up to emerge ready for the village's tulip festival next weekend. Nearby were one or two spikes of the grape hyacinth *Muscari inconstictum*, and plenty of *Geranium tuberosum*, while an Eastern Bonelli's Warbler slipped through the trees, calling as it continued its journey northwards to the oak forests of the Balkans.

After stocking up on delicious Cypriot pastries, we skirted Paphos and soon arrived on the outskirts of the quiet village of Agia Varvara. Along the river valley, a series of agricultural water storage ponds were anything but quiet, with a cacophony of croaking and quacking coming from the (apparently) abundant Cyprus Water Frogs: despite the obvious large numbers of animals at home in the ponds, it took us quite a while to be able to catch sight of a couple, resting on the riverbank. Less raucous, we also picked out the soft trilling of Cypriot Green Toad which, after the distant calling of Savigny's Tree Frogs from the garden last night completed our 'heard' trio of Cypriot amphibians.

Bird-wise, as we approached the first pool a handful of Coot and Moorhen scattered into the surrounding reeds, where they joined a single Little Grebe in hiding from us intruders. Apparently less concerned by our presence, but just as hard to see, were at least three Little Crakes picking their way quietly through the reedy margins, occasionally wandering across the bare rocky 'beaches' in between one reed clump and the next. Not so much shy as just tiny and unobtrusive, we all eventually got good views of these mini-Moorhens, feeding up on their way north.

A pair of Little Owls scowled at us from a nearby cliff, and dragonflies on the wing included both Vagrant and Lesser Emperors, and Red-veined Darters aplenty.

Alas, the path at the other side of the river proved impassable, so we got back on the bus and headed to the nearby beach at Mandria for our picnic lunch.

The chilly wind had picked up a bit, and brought in the first rain showers of the day as we were exploring the rough grasslands and ploughed areas behind the beach. The rain shower may have been responsible for the appearance of three Eastern Subalpine Warblers in a patch of bushes, while a handful each of Isabelline and Northern Wheatears were running about along the coastal track. A hunting Kestrel flushed a Quail, and a handful of Yellow Wagtails of the south-east European Black-headed subspecies, flew overhead, while a group of at least thirty Short-toed Larks were spotted, first flying overhead and then feeding in the ploughed sandy area, posing for us alongside the larger Crested Lark.

For the more botanically-minded, the sandy upper beach was home to some interesting coastal plants: the stroke-able Sea Medick *Medicago maritima*, the salt-loving trefoil *Lotus halophilus*, some big clumps of Yellow Horned Poppy *Glaucium flavum*, and a couple of coastal cabbages: Three-horned Stock *Matthiola tricuspidata* and Sea Rocket *Cakile maritima*.

From here, we had one last stop: following a tip off from the birdwatchers' grapevine, we moved a little way inland to an unprepossessing area of polytunnels, filled with capsicum peppers where, perched on the last fence, we found what we were looking for: a lovely little male Namaqua Dove, a budgie-sized wind-blown vagrant from Arabia and just the 12<sup>th</sup> record for Cyprus. He initially flew into some distant cypress trees, but soon returned to the nearby fence, where he preened himself, wondering what all the fuss was about...

### **Day Seven: 25<sup>th</sup> March. Smygies and Neo Chorio**

This morning we set off up to the ridge of the Akamas, above the Smygies picnic site, from where we spent the rest of our day walking gently back down hill all the way to the coast, pausing en route for a taverna lunch in the sleepy 'new' (yet clearly old) village of Neo Chorio.

At the top of the ridge, we started with a suite of plants endemic to the serpentinite rock: the little yellow flowers of *Odontarrhena akamasica* (formerly known as *Alyssum akamasicum*), the grey rosettes of *Centaurea akamantis* (along with the previous species, only found on the exposed rocks of the Akamas Peninsula) and the pink trumpets of *Thymus integer* (found here and up in the Troodos mountains).

Walking on a little, we found our first new orchids of the day: the elegant pink flowers of the endemic Troodos Orchid, formerly a species of its own but now relegated to a subspecies of the Anatolian Orchid *Orchis anatolica* subsp. *troodi*.

Nearby, at least three Cyprus Warblers could be heard singing from the thorny Genista bushes around us, with one male eventually popping up for us, while a croaking Raven was heard overhead.

After soaking up the spectacular view across to the undeveloped western side of the Akamas, including the lovely sandy Lara beach, home to a large nesting colony of Loggerhead Turtles, we turned round and began our walk back downhill.

From here on, the day became one for the orchid lovers, with 21 different 'kinds' of orchid seen by the end of the day: new for us were the buttery yellow spikes of the Roman Orchid *Dactylorhiza romana*; the ghostly white spikes of the green-flowered form of Bee Orchid *Ophrys apifera* var. *chlorantha* in the pine forest; the narrow-waisted *Ophrys umbilicata* subsp. *lapethica*; the broad flowers of *Ophrys omegaifera* subsp. *israelitica* with the pale W across the lip; and the long-finished tiny spikes of the Cyprus Four-spotted Orchid *Orchis x sezekiana*.

A shy Cyprus Freshwater Crab put in an appearance at the small stream by the chapel of Agios Minas, and a small party of Cretzschmar's Buntings were found on the edge of Neo Chorio.

## Cyprus 2026: trip report and species lists

After a delicious feast at the taverna, we walked back to the hotel through the quiet hillside lanes, where the last bit of excitement came in the form of a male Cyprus Wheatear, posing nicely amongst the olive and carob trees just within sight of the hotel.

### Day Eight: 26<sup>th</sup> March. Departure

A lazy morning, with one last breakfast on the terrace (in bright sunshine for a change!), and then it was time to bid farewell to Aphrodite Beach, and make our way back to Paphos and our various flights home.

Philip Precey, Wildlife Travel. March 2026



Above (left to right): *Ophrys omegaifera* subsp *israelitica*, *Serapias bergonii* and *Himantoglossum robertianum*

## PLANTS

This checklist follows the taxonomy published by the Royal Botanic Gardens, Kew **Plants of the World Online** as updated by <https://powo.science.kew.org>

Most plant species do not have English names and even when they do, these vary according to author. A common name is given as a guide to help those who are not familiar with the scientific name. Plant families are in alphabetical order, for simplicity: the English name of a family member is also given so you can relate the family to plants you may know.

### FERNS

#### Ophioglossaceae (adder's-tongue family)

*Ophioglossum lusitanicum* **Small Adder's Tongue** tiny fronds amongst the Ranunculus rosettes by the rock pools, Pegeia & Latchi

#### Pteridaceae (maidenhair fern family)

*Adiantum capillus-veneris* **Maidenhair Fern.** damp rocks around the Baths of Aphrodite

### CONIFERS

#### Cupressaceae (cypress family)

*Cupressus sempervirens* **Mediterranean Cypress.** common roadside tree, mostly planted

*Juniperus turbinata* one of the dominant maquis shrubs and forest understory: eg Pegeia, Smygies

#### Ephedraceae (joint-pine family)

*Ephedra foemina* **Jointed Pine.** 'lego plant', eg Pegeia Forest

#### Pinaceae (pine family)

*Pinus brutia* **Turkish Pine.** the canopy tree in Pegeia Forest

### DICOTYLEDONS

#### Amaranthaceae (amaranth family) (includes former Chenopodiaceae)

*Bosea cypria* the privet-like shrub, on the way to Baths of Aphrodite. Genus has an interesting distribution, with 3 species: one in the Himalayas, one in Cyprus, one in the Canary Islands, a distribution which mirrors that of the cedars

#### Anacardiaceae (sumac family)

*Pistacia atlantica* eg the large trees at Agios Neophytos and Paphos lighthouse

*Pistacia lentiscus* **Mastic Tree** common shrub on dry hillsides etc, with pinky-red berries.

*Pistacia terebinthus* **Turpentine Tree** deciduous tree, noted on the walk from Latchi

#### Apiaceae (carrot family)

*Crithmum maritimum* **Rock Samphire.** Cape Drepanum

*Daucus carota ssp maximus* **Wild Carrot.** Common roadside plant

*Ferula communis* **Giant Fennel.** Common roadside plant, big yellow 'pom pom' flowers

*Scandix pecten-veneris* **Shepherd's Needle.** Common field margin plant

*Smyrniolus atrum* **Alexanders.** eg Baths of Aphrodite

#### Aristolochiaceae (birthwort family)

*Aristolochia sempervirens* **Climbing Birthwort.** yellow 'Dutchman's pipe' flowers, Baths of

Cyprus 2026: trip report and species lists

Aphrodite & nr Latchi: caterpillar food plant of Eastern Festoon	
<b>Asteraceae (daisy family)</b>	
<i>Anthemis rigida</i>	<b>Rayless Chamomile.</b> eg Baths of Aphrodite
<i>Calendula arvensis</i>	<b>Field Marigold.</b> Common roadside and field margin plant
<i>Carduus pycnocephalus</i>	<b>Italian Thistle.</b> Very spiny flower heard, Cape Drepanum
<i>Centaurea akamantis</i>	greyish rosettes on exposed serpentinite, Smygies
<i>Crocodylium creticum</i>	rosettes on sandy beaches, eg Tombs of the Kings and Mandria
<i>Dittrichia viscosa</i>	behind Mandria beach
<i>Filago contracta</i>	small fuzzy cudweed
<i>Geropogon hybridus</i>	small lilac 'goats beard'
<i>Glebionis coronaria</i>	<b>Crown Daisy.</b> Common roadside and field margins plant
<i>Helichrysum stoechas</i>	yellow flowers, rocky hillsides
<i>Notobasis syriaca</i>	<b>Syrian Thistle.</b> Thistle with 'clustered' flower heads, hillsides above hotel
<i>Pallenis spinosa</i>	<b>Spiny Pallenis.</b> Yellow 'daisy' with spiny bracts
<i>Phagnalon graecum</i>	shaving brush flowers, rocky hillsides
<i>Ptilostemon chamaepeuce</i>	eg Baths of Aphrodite botanic garden
<i>Rhagadiolus stellatus</i>	field margins above the hotel: star-shaped arrangement of seed pods, with knotted central pods.
<i>Senecio glaucus</i> ssp. <i>cyprius</i>	Tiny 'groundsel', on the beach at Tombs of the Kings
<i>Silybum marianum</i>	<b>Milk Thistle.</b> Common roadside plant: pale veins
<i>Sonchus oleraceus</i>	<b>Smooth Sow-thistle.</b> Common field margin plant
<i>Tragopogon porrifolius</i>	<b>Goat's Beard.</b> Larger lilac flowers.
<b>Boraginaceae (forget-me-not family)</b>	
<i>Anchusa aegyptiaca</i>	<b>Eastern Alkanet.</b> Creamy yellow flowers, bristly leaves
<i>Anchusa azurea</i>	<b>Large Blue Alkanet.</b> Deep blue flowers, eg roadside near hotel
<i>Anchusa strigosa</i>	Tall, pale flowers, roadside on 24 <sup>th</sup>
<i>Anchusa undulata</i>	Low growing, deep purple, roadside on 24th
<i>Buglossoides arvensis</i>	<b>Corn Gromwell.</b> Pale creamy flowers, eg roadside near hotel
<i>Echium angustifolium</i>	<b>Narrow-leaved Bugloss.</b> deep cerise flowers, eg roadside near hotel
<i>Lithodora hispidula</i>	Common shrub in maquis, low growing with pink and white flowers
<i>Onosma fruticosa</i>	goldendrop, Smygies
<b>Brassicaceae (cabbage family)</b>	
<i>Odotarrhena akamasica</i>	= <i>Alyssum akamasicum</i> . tiny yellow flowers, on exposed serpentinite, Smygies
<i>Biscutella didyma</i>	Twin seed pod, eg Pegeia
<i>Cakile maritime</i>	<b>Sea Rocket.</b> Eg Cape Drepanum
<i>Capsella bursa-pastoris</i>	<b>Shepherd's-purse.</b> common roadside weed
<i>Matthiola tricuspidata</i>	<b>Three-horned Stock.</b> eg Cape Drepanum
<b>Cactaceae (cactus family)</b>	
<i>Opuntia maxima</i>	<b>Prickly Pear.</b> occasional around villages, eg edges of Neo Chorio
<b>Campanulaceae (bellflower family)</b>	
<i>Campanula erinus</i>	small roadside bellflower, Smygies

<b>Caprifoliaceae (honeysuckle family) (includes former Dipsacaceae)</b>	
<i>Valeriana italica</i>	<b>Italian Valerian.</b> tall valerian, Baths of Aphrodite
<i>Valeriana sp.</i>	<b>a cornsalad.</b> Baths of Aphrodite
<b>Caryophyllaceae (carnation family)</b>	
<i>Petrorhagia dubia</i>	tiny pink 'childing' pink
<i>Minuartia picta</i>	pink 'licked' sandwort, Smygies
<i>Paronychia argentea</i>	on beaches and tracks, silvery bracts
<i>Paronychia macrosepala</i>	Tombs of the Kings
<i>Silene behen</i>	field margins above Latchi
<i>Silene discolor</i>	Tiny pinky catchfly, top of the beach, Cape Drepanum
<i>Spergularia bocconii</i>	'sea spurrey', Cape Drepanum & Mandria beaches
<b>Cistaceae (rock-rose family)</b>	
<i>Cistus criticus</i>	<b>Grey Cistus</b> large pink flowers, crumpled petals
<i>Cistus ladanifer</i>	In botanic garden
<i>Cistus monspeliensis</i>	<b>Narrow-leaved Cistus</b> white flowers, narrow sticky leaves
<i>Cistus parviflorus</i>	<b>Small-flowered Cistus</b> small pink flowers, rounded leaves
<i>Cistus salviifolius</i>	<b>Sage-leaved Cistus</b> white flowers, oval leaves
<i>Cistus x skangergii</i>	Pink-flowered, narrow leaved hybrid between <i>monspeliensis</i> and <i>parviflorus</i> : rock pools nr Latchi
<i>Fumana arabica</i>	<b>Arabian Rock-rose.</b> Smygies
<i>Tuberaria guttata</i>	<b>Spotted Rock-rose.</b> Smygies
<b>Convolvulaceae (bindweed family)</b>	
<i>Convolvulus althaeoides</i>	<b>Mallow-leaved Bindweed.</b> big pink flowers, eg Cape Drepanum
<i>Convolvulus pentapetaloides</i>	Small, blue-lilac flowers, with yellow and white centres, narrow leaves. eg Cape Drepanum
<i>Convolvulus siculus</i>	Small, blue-lilac flowers, with heart-shaped leaves. eg Baths of Aphrodite
<i>Cuscuta sp</i>	both red- and yellow-stemmed plants seen
<b>Crassulaceae (stonecrop family)</b>	
<i>Sedum eriocarpum</i>	glaucous rosettes, rock pools at Pegeia and Latchi
<i>Sedum microcarpum</i>	Fine red succulent, rock pools at Pegeia and Latchi
<i>Umbilicus rupestris</i>	<b>Navelwort.</b> Baths of Aphrodite
<b>Cucurbitaceae (gourd family)</b>	
<i>Bryonia cretica</i>	<b>White Bryony.</b> Scrambling vine, eg roadside near hotel
<i>Ecballium elaterium</i>	<b>Squirting Cucumber.</b> Mandria beach
<b>Euphorbiaceae (spurge family)</b>	
<i>Euphorbia dimorphocaulon</i>	low growing, eg Pegeia
<i>Mercurialis annua</i>	<b>Annual Mercury.</b> Common roadside plant
<i>Ricinus communis</i>	<b>Castor Oil Plant.</b> In ditch near the hotel
<b>Fabaceae (pea family)</b>	
<i>Calycotome villosa</i>	<b>Spiny Broom.</b> common yellow flowered shrub, sweetly scented. Foodplant of Paphos Blue.
<i>Ceratonia siliqua</i>	<b>Carob.</b> common tree.
<i>Cercis siliquastrum</i>	<b>Judas Tree.</b> Neo Chorio

Cyprus 2026: trip report and species lists

<i>Genista fasselata</i>	Spikier yellow-flowered shrub, eg Smygies
<i>Hymenocarpus circinnatus</i>	Small orangey flower, flat circular 'pod'
<i>Lathyrus aphaca</i>	<b>Yellow Vetchling.</b> Creamy yellow flowers, leaf-like stipules
<i>Lathyrus blepharicarpos</i>	brick-red flowers, 'eye lash' seed pods. Common roadside plant
<i>Lathyrus gorgoneia</i>	Apricot-orange flowers
<i>Lathyrus ochrus</i>	creamy-yellow flowers, leaf-like stems
<i>Lotus edulis</i>	eg around the hotel car park
<i>Lotus halophilus</i>	Mandria beach
<i>Lotus tetragonolobus</i>	<b>Asparagus Pea.</b> Deep red flowers, common roadside plant. = <i>Tetragonolobus purpureus</i>
<i>Medicago marina</i>	<b>Sea Medick.</b> Beach, eg Cape Drepanum
<i>Melilotus indicus</i>	common roadside plant
<i>Onobrychis caput-galli</i>	common roadside plant
<i>Ononis pubescens</i>	yellow flowers, sticky leaves, foul smelling
<i>Trifolium cherleri</i>	<b>Cup Clover.</b> Latchi lanes
<i>Trifolium clypeatum</i>	<b>Shield Clover.</b> Common roadside plant
<i>Trifolium spumosum</i>	<b>Bladder Clover.</b> Agia Varvara
<i>Trifolium stellatum</i>	<b>Star Clover.</b> Common roadside plant
<i>Trifolium tomentosum</i>	<b>Woolly Clover.</b> Pegeia
<i>Tripodion tetraphyllum</i>	<b>Bladder Vetch.</b> Common roadside plant. = <i>Phisanthyllis tetraphylla</i>
<i>Vicia hybrida</i>	<b>Hairy Yellow-vetch.</b> Roadside near the hotel
<i>Vicia peregrina</i>	pale purple flowers, Pegeia
<i>Vicia sativa</i> ssp. <i>sativa</i>	<b>Common Vetch.</b> common roadside plant
<b>Fagaceae (beech family)</b>	
<i>Quercus infectoria veneris</i>	<b>Deciduous or Royal Oak.</b> eg the 'Magic Oak', Polis
<b>Frankeniaceae (sea heath family)</b>	
<i>Frankenia hirsute</i>	Cape Drepanum
<b>Geraniaceae (geranium family)</b>	
<i>Erodium cicutarium</i>	<b>Common Stork's-bill.</b> eg Mandria
<i>Erodium gruinum</i>	<b>Long-beaked Stork's-bill.</b> common roadside plant, large lilac flowers
<i>Erodium moschatum</i>	<b>Musk Stork's-bill.</b> common roadside plant, small, pink flowers
<i>Geranium purpureum</i>	<b>Little Robin.</b> eg Baths of Aphrodite
<i>Geranium tuberosum</i>	<b>Tuberous Crane's-bill.</b> Polemi tulip fields
<b>Lamiaceae (mint family)</b>	
<i>Ajuga chamaepitys</i>	<b>Ground Pine.</b> on rocks at the Pegeia viewpoint
<i>Lamium amplexicaule</i>	<b>Henbit.</b> Field margins
<i>Lamium moschatum</i>	<b>Musk Deadnettle.</b> white flowers, white 'flag', eg fields near hotel
<i>Micromeria nervosa</i>	woody, upright 'thyme' in maquis, eg Baths of Aphrodite
<i>Prasium majus</i>	common, scrambling shrub in hedgerows, twin white flowers.
<i>Salvia fruticose</i>	shrubby, purple-flowered sage, common in maquis
<i>Salvia viridis</i>	small, white-flowered sage, roadside plant
<i>Thymus integer</i>	low sprawling thyme, on exposed serpentinite, Smygies
<b>Linaceae (flax family)</b>	
<i>Linum bienne</i>	<b>Pale Flax.</b> pale blue flowers, common roadside plant

<b>Lythraceae (purple loosestrife family)</b>	
<i>Lythrum junceum</i>	False Grass-Poly. Latchi rock pools
<i>Punica granatum</i>	Pomegranate
<b>Meliaceae (mahogany family)</b>	
<i>Melia azedarach</i>	Persian Lilac. eg Paphos mosaics
<b>Myrtaceae (myrtle family)</b>	
<i>Myrtus communis</i>	Myrtle. Baths of Aphrodite botanic gardens
<b>Oleaceae (olive family)</b>	
<i>Phillyrea latifolia</i>	shrub near the chapel, Smygies
<i>Olea europaea</i>	Olive
<b>Orobanchaceae (broomrape family)</b>	
<i>Orobanche minor</i>	Common Broomrape. Roadside near the hotel
<i>Orobanche ramosa</i>	Branched Broomrape. Large purple broomrape, field margins above the hotel
<i>Orobanche nana</i>	Smaller purple broomrape, on Oxalis, field margins above the hotel
<i>Orobanche pubescens</i>	Field margins above the hotel
<i>Parentucellia flaviflora</i>	small bartsia with creamy yellow flowers, eg Baths of Aphrodite. Recently split from <i>Parentucellia latifolia</i>
<b>Oxalidaceae (wood-sorrel family)</b>	
<i>Oxalis pes-caprae</i>	Bermuda Buttercup. South African weed, common everywhere!
<b>Papaveraceae (poppy family)</b>	
<i>Fumaria capreolata</i>	White Ramping Fumitory. Roadsides towards Baths of Aphrodite
<i>Fumaria parviflora</i>	Small-flowered Fumitory. Field margins above the hotel
<i>Glaucium flavum</i>	Yellow Horned Poppy. Mandria beach
<i>Papaver rhoeas</i>	Corn Poppy. Common field margin plant
<b>Plantaginaceae (plantain family)</b>	
<i>Limosella aquatica</i>	Mudwort. floating leaves, rock pools at Pegeia
<i>Linaria chalepensis</i>	Aleppo Toadflax. small white toadflax on field margins
<i>Misopates orontium</i>	Weasel Snout. roadside near the hotel
<i>Plantago afra</i>	Branched Plantain. field margins, towards Neo Chorio
<i>Plantago coronopus</i>	Bucks'-horn Plantain. in gravel around the hotel
<i>Plantago cretica</i>	Tombs of the Kings
<i>Plantago lanceolata</i>	Ribwort Plantain
<i>Veronica cymbalaria</i>	Pale Speedwell. field margins, eg Polemi
<b>Plumbaginaceae (leadwort family)</b>	
<i>Limonium sinuatum</i>	larger white and purple flowers, broad leaves
<i>Limonium virgatum</i>	rocky shore, small leaves, very fine flowers
<b>Polygalaceae (milkwort family)</b>	
<i>Polygala venulose</i>	white flowers, Smygies
<b>Polygonaceae (dock family)</b>	
<i>Rumex spinosus</i>	Spiny Dock. Weedy areas, eg Cape Drepanum
<b>Primulaceae (primrose family)</b>	
<i>Cyclamen persicum</i>	Persian Sowbread. common in rocky areas
<i>Lysimachia arvensis</i>	Scarlet Pimpernel. common roadside/field margin plant

Cyprus 2026: trip report and species lists

<i>Lysimachia loeflingii</i>	blue-flowered pimpernel
<i>Samolus valerandi</i>	<b>Brookweed.</b> Smygies
<b>Ranunculaceae (buttercup family)</b>	
<i>Anemone coronaria</i>	<b>Crown Anemone.</b> a couple of late flowers on the Latchi walk, and in the tulip fields at Polemi
<i>Ranunculus asiaticus</i>	<b>Turban Buttercup.</b> Common in rocky areas
<i>Ranunculus cytheraeus</i>	more usually autumn flowering, broad leaves held flat to the ground, damp areas in Pegeia & Smygies
<i>Ranunculus peltatus</i>	<b>Pond Water Crowfoot.</b> Pegeia rock pools
<b>Rhamnaceae (buckthorn family)</b>	
<i>Zizyphus lotus</i>	very thorny bush, near the entrance to the mosaics, Paphos
<b>Rosaceae (rose family)</b>	
<i>Crataegus azarolus</i>	<b>Mediterranean Hawthorn.</b> eg Polemi
<i>Eriobotrya japonica</i>	<b>Loquat</b>
<i>Prunus dulcis</i>	<b>Almond</b>
<i>Pyrus syriacus</i>	<b>Syrian Pear.</b> Smygies
<i>Sarcopoterium spinosum</i>	<b>Thorny Burnet.</b> Common in the phrygana, 'chicken wire' bush
<b>Rubiaceae (madder family)</b>	
<i>Rubia tenuifolia</i>	<b>Narrow-leaved Madder.</b> Smygies
<i>Sherardia arvensis</i>	<b>Field Madder.</b> Field margins
<i>Theligonum cynocrambe</i>	<b>Dogs Cabbage.</b> Scraty weed growing on rocks
<b>Rutaceae (rue family)</b>	
<i>Ruta chalepensis</i>	<b>Rue.</b> below the viewpoint at Pegeia
<b>Santalaceae (sandalwood family)</b>	
<i>Thesium humile</i>	the bastard-toadflax, Smygies
<b>Solanaceae (nightshade family)</b>	
<i>Mandragora officinarum</i>	<b>Mandrake.</b> Cape Drepanum
<i>Withania somnifera</i>	broad-leaved shrub amongst the Zizyphus, Paphos mosaics
<b>Styracaceae (storax family)</b>	
<i>Styrax officinalis</i>	sweetly-smelling white flowered shrub, Baths of Aphrodite
<b>Tamaricaceae (tamarisk family)</b>	
<i>Tamarix tetragyna</i>	eg on the walk from the Baths of Aphrodite
<b>Urticaceae (nettle family)</b>	
<i>Urtica urens</i>	<b>Small Nettle.</b> Field margins, hotel gardens
<i>Urtica pilulifera</i>	<b>Roman Nettle.</b> Fuzzy balls
<b>Verbenaceae (vervain family)</b>	
<i>Lantana camara</i>	<b>Lantana.</b> naturalised South American shrub

**MONOCOTYLEDONS**

**Amaryllidaceae (daffodil family)**

<i>Allium neapolitanum</i>	<b>Naples Garlic.</b> the common roadside allium
<i>Allium trifoliatum</i>	<b>Pink Garlic.</b> more delicate allium, eg Baths of Aphrodite
<i>Pancratium maritimum</i>	<b>Sea-daffodil.</b> Mandria beach (leaves only)

<b>Araceae (arum family)</b>	
<i>Arisarum vulgare</i>	<b>Friar's Cowl.</b> Smaller 'arum' leaves, winter flowering, common at roadsides
<i>Arum concinatum</i>	'cuckoo pint' leaves, roadside between the hotel and Baths of Aphrodite
<b>Asparagaceae (asparagus family)</b>	
<i>Asparagus acutifolius</i>	<b>Wild Asparagus</b>
<i>Asparagus horridus</i>	very spiny, woody asparagus, Tombs of the Kings
<i>Bellevalia nivalis</i>	<b>Snowy Bellavalia</b>
<i>Bellevalia trifoliata</i>	<b>Three-leaved Bellavalia</b>
<i>Drimia maritima</i>	<b>Sea Squill.</b> broad leaves, rocky hillsides
<i>Muscari comosum</i>	<b>Tassel Hyacinth</b>
<i>Muscari inconstictum</i>	Polemi tulip fields
<i>Ornithogalum pedicellare</i>	small white star-shaped flowers, eg Pegeia
<b>Asphodelaceae (asphodel family)</b>	
<i>Asphodelus fistulosus</i>	<b>Hollow-stemmed Asphodel.</b> finer leaves
<i>Asphodelus ramosus</i>	<b>Branched Asphodel.</b> broader leaves
<b>Iridaceae (iris family)</b>	
<i>Gladiolus italicus</i>	<b>Field Gladiolus</b>
<i>Gladiolus triphyllus</i>	pine forests, eg Pegeia and Smygies
<i>Moraea sisyrinchium</i>	<b>Barbary Nut</b>
<b>Liliaceae (lily family)</b>	
<i>Gagea graeca</i>	white-flowered Gagea, in rocky areas
<i>Tulipa agenensis</i>	Polemi tulip fields: first handful of flowers just emerging
<b>Smilacaceae (greenbriar family)</b>	
<i>Smilax aspera</i>	<b>Smilax.</b> Common scrambling thorny vine.
<b>Orchidaceae (orchid family)</b>	
<i>Anacamptis collina</i>	<b>Fan-lipped Orchid.</b> seed heads from winter flowers, near the hotel
<i>Anacamptis morio</i> subsp <i>syriaca</i>	<b>Eastern Green-winged Orchid.</b> pine woods, eg Pegeia and Smygies
<i>Anacamptis pyramidalis</i>	<b>Pyramidal Orchid.</b> just coming into flower, Latchi rock pools
<i>Dactylorhiza romana</i>	<b>Roman Orchid.</b> pine woods, above Smygies picnic site.
<i>Himantoglossum robertianum</i>	<b>Giant Orchid.</b> Latchi to Neo Chorio, last few fresh spikes
<i>Neotinea maculata</i>	<b>Dense-flowered Orchid.</b> Pegeia and Smygies
<i>Ophrys apifera</i> var <i>chlorantha</i>	<b>Bee Orchid.</b> greeny-white form, Smygies
<i>Ophrys argolica</i> subsp <i>elegans</i>	'fighter pilot' goggles and swept back 'wings': Pegeia and Smygies
<i>Ophrys bornmuelleri</i> subsp <i>grandiflora</i>	Pegeia and Smygies
<i>Ophrys fusca</i> subsp <i>cinereophila</i>	'Sombre' bee orchid, with V-shaped throat, eg Pegeia and Smygies
<i>Ophrys lutea</i> subsp <i>galilaea</i>	'Yellow' bee orchid, common in phrygana/maquis habitats

Cyprus 2026: trip report and species lists

<i>Ophrys omegaifera</i> subsp <i>israelitica</i>	large flowered 'sombre' bee orchid, with U-shaped throat and white W on lip: Smygies
<i>Ophrys sphegodes</i> subsp <i>taurica</i>	'black currant chew' orchid, formerly <i>Ophrys mammosa</i>
<i>Ophrys umbilicata</i> subsp <i>flavomarginata</i>	larger/paler flowered 'woodcock' orchid, broad yellow margin, just going over
<i>Ophrys umbilicata</i> subsp <i>lapethica</i>	narrow 'waist', pink sepals, under pines below Smygies picnic site
<i>Ophrys umbilicata</i> subsp <i>umbilicata</i>	<b>Eastern Woodcock Orchid.</b> more brightly coloured 'woodcock' orchid, in the Serapias field above Latchi
<i>Orchis anatolica</i>	formerly <i>Orchis troodii</i> , under pine trees high on the ridge, Smygies
<i>Orchis italica</i>	<b>Naked Man Orchid.</b> Pegeia, Neo Chorio
<i>Orchis punctulata</i>	<b>Small-dotted Orchid.</b> going over, last one or two fresh spikes, Neo Chorio
<i>Orchis x sezikiana</i>	spotted leaves, purple stem: gone over, Smygies
<i>Serapias bergonii</i>	<b>Greek Tongue Orchid.</b> slimmer, paler plant, thin tongue
<i>Serapias orientalis</i>	<b>Eastern Tongue Orchid.</b> chunky, dark magenta, broad tongue
<i>Serapias politsii</i>	formerly <i>Serapias aphrodite</i> , very fine, delicate tongue orchid on thin soils around rock pools, Pegeia and Latchi
<i>Serapias vomeracea</i>	<b>Long-lipped Tongue Orchid.</b> formerly <i>Serapias levantina</i> , taller and more elegant than <i>S. orientalis</i> , chunkier than <i>S. bergonii</i>
<i>Spiranthes spiralis</i>	<b>Autumn Lady's Tresses.</b> Seed heads from last winter's flowers, Pegeia
<b>Posidoniaceae (seagrass family)</b>	
<i>Posidonia oceanica</i>	eg Mandria beach
<b>Potamogetonaceae (pondweed family)</b>	
<i>Zannichellia palustris</i>	<b>Horned Pondweed.</b> Rock pools, Pegeia

**BIRDS**

This checklist follows the taxonomy published in the **HBW and BirdLife International Illustrated Checklist of the Birds of the World**, as updated by [www.birdsoftheworld.org](http://www.birdsoftheworld.org)

English names follow those used in the **Collins Bird Guide** (3<sup>rd</sup> edition).

ENGLISH NAME	SCIENTIFIC NAME	Notes	1	2	3	4	5	6	7	8
<b>Family Phasianidae (Pheasants, Grouse and allies)</b>										
Black Francolin	<i>Francolinus francolinus</i>		H	H	H	H	H	H	H	H
Common Quail	<i>Coturnix coturnix</i>							X	H	
Chukar	<i>Alectoris chukar</i>			H				X	H	X
<b>Family Podicipedidae (Grebes)</b>										
Little Grebe	<i>Tachybaptus ruficollis</i>							X		
<b>Family Columbidae (Pigeons and Doves)</b>										
Rock Dove	<i>Columba livia</i>		X	X	X	X	X	X	X	X
Woodpigeon	<i>Columba palumbus</i>		X	X	X	X	X	X	X	X
Collared Dove	<i>Streptopelia decaocto</i>		X	X	X	X	X	X	X	X
Laughing Dove	<i>Spilopelia senegalensis</i>		X	X	X	X	X	X	X	X
Namaqua Dove	<i>Oena capensis</i>	Cyprus's 12 <sup>th</sup> record of this vagrant from sub-Saharan Africa/tropical Arabia, a male at Mandria on 24 <sup>th</sup>								
<b>Family Cuculidae (Cuckoos)</b>										
Great Spotted Cuckoo	<i>Clamator glandarius</i>				X	H				H
Common Cucko	<i>Cuculus canorus</i>								H	
<b>Family Apodidae (Swifts)</b>										
Alpine Swift	<i>Apus melba</i>				X		X			
Common Swift	<i>Apus apus</i>			X	X		X		X	
Pallid Swift	<i>Apus pallidus</i>				X					
<b>Family Rallidae (Rails, Gallinules and Coots)</b>										
Moorhen	<i>Gallinula chloropus</i>							X		
Coot	<i>Fulica atra</i>							X		
Little Crake	<i>Zapornia parva</i>	At least 3 (one female, and 2-3 males) on the reedy pool margins at Agia Varvara, 24 <sup>th</sup>								
<b>Family Charadriidae (Plovers and Lapwings)</b>										
Little Ringed Plover	<i>Charadrius dubius</i>					X				
<b>Family Scolopacidae (Sandpipers and allies)</b>										
Common Sandpiper	<i>Actitis hypoleucos</i>						X			
<b>Family Laridae (Gulls, Terns and Skimmers)</b>										
Yellow-legged Gull	<i>Larus michahellis</i>			X	X	X	X	X	X	X
Lesser Black-backed Gull	<i>Larus fuscus fuscus</i>				X					

Cyprus 2026: trip report and species lists

ENGLISH NAME	SCIENTIFIC NAME	Notes	1	2	3	4	5	6	7	8
	the dark-backed 'Baltic Gull'									
<b>Family Phalacrocoracidae (Cormorants and Shags)</b>										
Cormorant	<i>Phalacrocorax carbo</i>			X	X					
Mediterranean Shag	<i>Gulosus aristotelis desmarestii</i>			X		X	X	X	X	X
<b>Family Ardeidae (Herons, Egrets and Bitterns)</b>										
Little Egret	<i>Egretta garzetta</i>				X					
<b>Family Accipitridae (Hawks, Eagles and Kites)</b>										
Marsh Harrier	<i>Circus aeruginosus</i>				X		X	X		
Sparrowhawk	<i>Accipiter nisus</i>		X			X		X		
Common Buzzard	<i>Buteo buteo</i>								X	
Long-legged Buzzard	<i>Buteo rufinus</i>					X				
<b>Family Strigidae (Owls)</b>										
Little Owl	<i>Athene noctua</i>							X		
<b>Family Upupidae (Hoopoes)</b>										
Hoopoe	<i>Upupa epops</i>		X	X	X	X	X	X	X	X
<b>Family Falconidae (Falcons and Caracaras)</b>										
Kestrel	<i>Falco tinnunculus</i>		X	X	X	X	X	X	X	X
Peregrine	<i>Falco peregrinus</i>					X				
<b>Family Laniidae (Shrikes)</b>										
Woodchat Shrike	<i>Lanius senator</i>				X					
Isabelline Shrike	<i>Lanius isabellinus</i>	a long-staying wintering female on the Paphos headland on 21 <sup>st</sup> , present since November 2025, a vagrant from Central Asia								
<b>Family Corvidae (Crows, Jays and Magpies)</b>										
Magpie	<i>Pica pica</i>		X		X	X	X	X	X	X
Jackdaw	<i>Corvus monedula</i>		X	X	X	X	X	X	X	X
Hooded Crow	<i>Corvus cornix</i>		X	X	X	X	X	X	X	X
Raven	<i>Corvus corax</i>								H	
<b>Family Paridae (Tits)</b>										
Great Tit	<i>Parus major</i>			X	X	X	X	X	X	X
<b>Family Alaudidae (Larks)</b>										
Short-toed Lark	<i>Calandrella brachydactyla</i>							X		
Crested Lark	<i>Galerida cristata riggenbachi</i>				X	X	X	X		
<b>Family Cisticolidae (Cisticolas and allies)</b>										
Zitting Cisticola	<i>Cisticola juncidis</i>		X		X	X	X	X	X	
<b>Family Acrocephalidae (Reed Warblers and allies)</b>										
Moustached Warbler	<i>Acrocephalus melanopogon</i>	at least one singing from the reeds at Agia Varvara, 24 <sup>th</sup>								
Sedge Warbler	<i>Acrocephalus schoebanus</i>							X	X	
Reed Warbler	<i>Acrocephalus</i>							X		
<b>Family Hirundinidae (Swallows)</b>										
Swallow	<i>Hirundo rustica</i>		X	X	X	X	X	X	X	X

Cyprus 2026: trip report and species lists

ENGLISH NAME	SCIENTIFIC NAME	Notes	1	2	3	4	5	6	7	8
Red-rumped Swallow	<i>Cecropis daurica</i>			X	X	X	X		X	X
House Martin	<i>Delichon urbica</i>		X	X	X	X	X	X	X	X
<b>Family Phylloscopidae (Leaf Warblers)</b>										
Eastern Bonelli's Warbler	<i>Phylloscopus orientalis</i>				X			X		
Common Chiffchaff	<i>Phylloscopus collybita</i>			X	X	X	X	X	X	X
<b>Family Scotoceridae (Bush Warblers and allies)</b>										
Cetti's Warbler	<i>Cettia cetti</i>		H	H	H	H	H	H	H	H
<b>Family Sylviidae (Sylviid Warblers and allies)</b>										
Blackcap	<i>Sylvia atricapilla</i>		X	X	X	X	X	X	X	X
Lesser Whitethroat	<i>Curruca curruca</i>				X		X	X	X	
Rüppell's Warbler	<i>Curruca ruppeli</i>				X	X				
Cyprus Warbler	<i>Curruca melanothorax</i>	three males singing from Genista/Juniper scrub on the Akamas peninsula, 25 <sup>th</sup>								
Sardinian Warbler	<i>Curruca melanocephala</i>		X	X	X	X	X	X	X	X
Eastern Subalpine Warbler	<i>Curruca cantillans</i>				X	X		X		
Whitethroat	<i>Curruca communis</i>				X	X			X	
<b>Family Sturnidae (Starlings)</b>										
Starling	<i>Sturnus vulgaris</i>				X					
<b>Family Turdidae (Thrushes and allies)</b>										
Song Thrush	<i>Turdus philomelos</i>		X		X		X			
<b>Family Muscicapidae (Old World Flycatchers)</b>										
Robin	<i>Erithacus rubecula</i>					X				
Common Redstart	<i>Phoenicurus phoenicurus</i>				X	X			X	
Black Redstart	<i>Phoenicurus ochruros</i>				X	X				
Blue Rock Thrush	<i>Monticola solitarius</i>				X	X				
Common Rock Thrush	<i>Monticola</i>				X					
Common Stonechat	<i>Saxicola torquata</i>			X	X	X		X	X	
Caspian Stonechat	<i>Saxicola maurus hemprichii</i>	a scarce migrant to Cyprus, headed to breeding territories on the northern shores of the Caspian Sea: an influx occurred during our time on Cyprus: we saw 2 males at Paphos on 21 <sup>st</sup> and 1 at Cape Drepanum on 22 <sup>nd</sup>								
Northern Wheatear	<i>Oenanthe oenanthe</i>				X	X		X		X
Isabelline Wheatear	<i>Oenanthe isabellina</i>			X	X	X		X		
Cyprus Wheatear	<i>Oenanthe cypriaca</i>			X					X	
Eastern Black-eared Wheatear	<i>Oenanthe melanoleuca</i>			X	X	X	X	X	X	
Finsch's Wheatear	<i>Oenanthe finschii</i>	A late lingering male showed well at Paphos on 21 <sup>st</sup>								
<b>Family Passeridae (Old World Sparrows)</b>										
House Sparrow	<i>Passer domesticus</i>		X	X	X	X	X	X	X	X
Spanish Sparrow	<i>Passer hispaniolensis</i>				X		X	X	X	

Cyprus 2026: trip report and species lists

ENGLISH NAME	SCIENTIFIC NAME	Notes	1	2	3	4	5	6	7	8
<b>Family Motacillidae (Wagtails and Pipits)</b>										
Blue-headed Wagtail	<i>Motacilla flava flava</i>				X					
Black-headed Wagtail	<i>Motacilla flava feldegg</i>					X		X	X	
White Wagtail	<i>Motacilla alba alba</i>		X	X	X	X	X	X	X	X
Tawny Pipit	<i>Anthus campestris</i>				X					
Meadow Pipit	<i>Anthus pratensis</i>				X	X		X		
Tree Pipit	<i>Anthus trivialis</i>								X	
Red-throated Pipit	<i>Anthus cervinus</i>				X					
<b>Family Fringillidae (Finches and allies)</b>										
Chaffinch	<i>Fringilla coelebs</i>			X	X	X	X	X	X	X
Greenfinch	<i>Chloris chloris</i>			X	X	X	X	X	X	X
Linnet	<i>Linaria cannabina</i>				X				X	
Goldfinch	<i>Carduelis carduelis</i>			X	X	X	X	X	X	X
Serin	<i>Serinus serinus</i>			H	H	H	X		X	
<b>Family Emberizidae (Buntings)</b>										
Corn Bunting	<i>Emberiza calandra</i>			X	X			X		
Cretzschmar's Bunting	<i>Emberiza caesia</i>				X				X	

<b>REPTILES AND AMPHIBIANS</b>										
<b>AMPHIBIANS</b>										
Cyprus Green Toad	<i>Bufo (viridis) cypriensis</i>							H		
Savigny's Tree Frog	<i>Hyla savignyi</i>							H		
Cyprus Water Frog	<i>Pelophylax cypriensis</i>							X		
<b>REPTILES</b>										
<b>Family Agamidae (Agamids)</b>										
Cyprus Starred Agama	<i>Laudakia cypriaca</i>			X		X			X	
<b>Family Gekkonidae (Geckos)</b>										
Eastern Bent-toed Gecko	<i>Mediodactylus orientalis</i>					X				
<b>Family Lacertidae (Lizards)</b>										
Snake-eyed Lacertid	<i>Ophisops elegans</i>			X		X	X	D	X	
Troodos Wall Lizard	<i>Lacerta troodica</i>			X		X				
<b>Family Scincidae (Skinks)</b>										
Bridled Skink	<i>Heremites vittata</i>			X			X			
Budak's Snake-eyed Skink	<i>Ablepharus budaki</i>					X		X	X	

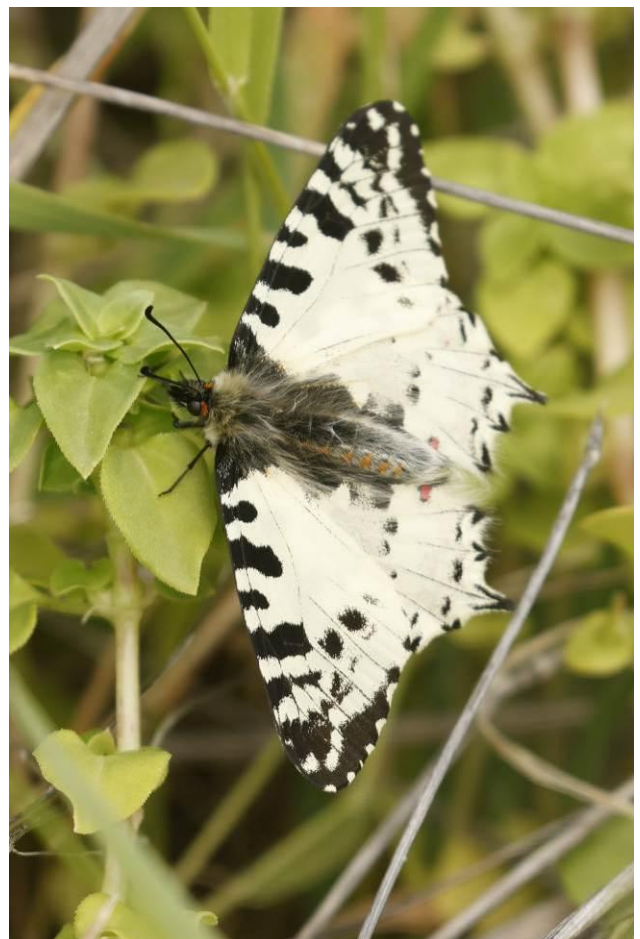
**BUTTERFLIES**

ENGLISH NAME	SCIENTIFIC NAME	notes	1	2	3	4	5	6	7	8
<b>Family Papilionidae (Swallowtails)</b>										
Swallowtail	<i>Papilio machaon syriacus</i>					X		X		
Eastern Festoon	<i>Zerynthia cerisyi cypria</i>						X		X	
<b>Family Pieridae (Whites)</b>										
Large White	<i>Pieris brassicae</i>		X			X	X	X	X	
Eastern Dappled White	<i>Euchloe ausonia taurica</i>					X				
Orange Tip	<i>Anthocaris cardamines</i>		X			X				
Clouded Yellow	<i>Colias croceus</i>					X	X		X	
Cleopatra	<i>Gonopteryx cleopatra taurica</i>						X			
<b>Family Lycaenidae (Blues, Coppers and Hairstreaks)</b>										
Long-tailed Blue	<i>Lampides boeticus</i>					X				
Paphos Blue	<i>Glaucopsyche paphos</i>		X			X				
Common Blue	<i>Polyommatus icarus</i>					X		X		
<b>Family Nymphalidae (Admirals and Fritillaries)</b>										
Painted Lady	<i>Vanessa cardui</i>		X			X	X	X	X	
Red Admiral	<i>Vanessa atalanta</i>		X							
Large Wall	<i>Lasiommata maera</i>					X				

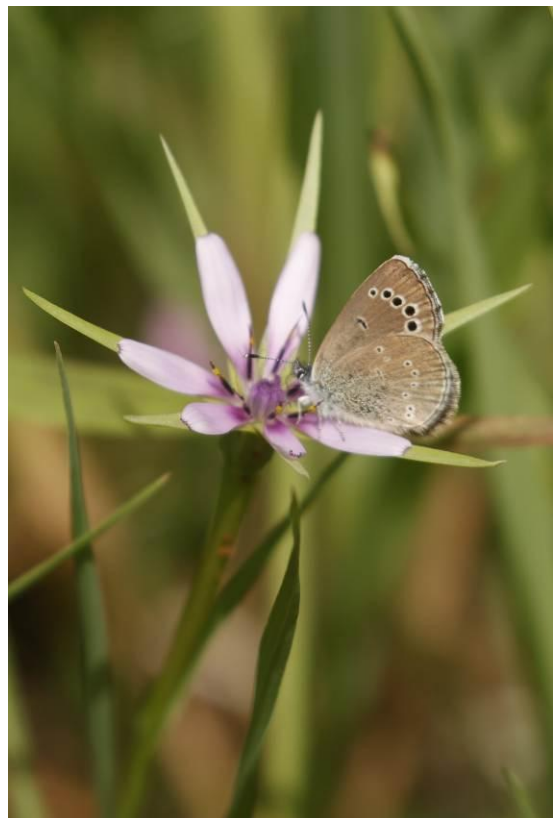
**MOTHS: Crambidae**Rush Veneer *Nomophila noctuella* to light, 23<sup>rd</sup>Rusty Dot Pearl *Udea ferrugalis* to light, 22<sup>nd</sup>**MOTHS: Geometridae***Oulobophora externaria* to light, 20<sup>th</sup>: larvae feed on *Pistacia***MOTHS: Noctuidae**Dark Sword Grass *Agrotis ipsilon* to light, 22<sup>nd</sup> and 23<sup>rd</sup>Shutte-shaped Dart *Agrotis puta* to light, 22<sup>nd</sup>Turnip Moth *Agrotis segetum* to light, 23<sup>rd</sup>Gregson's Dart *Agrotis spinifera* to light, 20<sup>th</sup>Pale Mottled Willow *Caracrina clavipalpis* to light, 22<sup>nd</sup>*Mythimna sicula* to light, 23<sup>rd</sup>Pearly Underwing *Peridroma saucia* to light, 23<sup>rd</sup>Small Mottled Willow *Spodoptera exigua* to light, 20<sup>th</sup>Mediterranean Brocade *Spodoptera littoralis* to light, 20<sup>th</sup>**MOTHS: Plutellidae**Diamondback Moth *Plutella xylostella* to light, 22<sup>nd</sup> and 23<sup>rd</sup>

MISCELLANEOUS

Levant Freshwater Crab	<i>Potamon potamios</i>	in the roadside channel, Smygies
Megarian Centipede	<i>Scolopendra cingulata</i>	
Vagrant Emperor	<i>Anax ephippiger</i>	abundant around the Baths of Aphrodite walk, and at Agia Varvara
Lesser Emperor	<i>Anax parthenope</i>	two males, Agia Varvara
Red-veined Darter	<i>Sympetrum fonscolombii</i>	eg Agia Varvara
European Eel	<i>Anguilla Anguilla</i>	two in Aphrodites' bath tub
Western mosquito Fish	<i>Gambusia affinis</i>	invasive North American fish, in the roadside channel, Smygies



*Aristolochia sempervirens* (left), the larval foodplant of the Eastern Festoon (right)



(clockwise, from top left): *Ophrys argolica* subsp *elegans* at Smygies; *Cyclamen persicum* at the Baths of Aphrodite; *Glebionis coronaria* around Latchi; Paphos Blue on *Geropogon hybridus* in Pegeia Forest.



(clockwise, from top left): Cyprus Wheatear near Latchi, Cretzschmar's Bunting at Tombs of the Kings, Isabelline Shrike at Paphos Headland, Namaqua Dove at Mandria



(clockwise, from top left): Tawny Pipit at Tombs of the Kings; *Dactylorhiza romana* at Smygies; Isabelline Wheatear at Mandria; *Ophrys sphegodes* subsp *taurica*, Symgies



*thank you for travelling with us*

[www.wildlife-travel.co.uk](http://www.wildlife-travel.co.uk)

01954 713575

[wildlifetravel@wildlifebcn.org](mailto:wildlifetravel@wildlifebcn.org)

 [/WildlifeTravel.UK](https://www.facebook.com/WildlifeTravel.UK)



[@wildlifetraveller](https://www.instagram.com/wildlifetraveller)



[@wildlifetraveller](https://twitter.com/wildlifetraveller)

*The Manor House, Broad Street, Great Cambourne, Cambridge CB23 6DH*